

TOM ARNOLD'S PRODUCTION OF

IVOR NOVELLO'S

1956

# "The Dancing Years"

ON ICE



PROGRAMME 6d

**GLOBE THEATRE**  
STOCKTON-ON-TEES

AN A.B.C THEATRE

Always  
"TOP OF THE BILL"

# CAMERON'S STRONGARM ALE

OBTAINABLE EVERYWHERE IN THE NORTH-EAST

Coming to the GLOBE, Monday, May 14, 1956

**FESS PARKER**

**BUDDY  
EBSEN**

**WALT  
DISNEY'S**



**Tons of  
Trouble**

**RICHARD  
(MR. PASTRY)  
HEARNE**

with  
**WILLIAM HARTNELL**

TEL. 68641

TEL. 68641

## H. P. TYLER LTD.

39 HIGH STREET . STOCKTON-ON-TEES

Family **FOOTWEAR** Specialists

EARLY SPRING STYLES NOW ON DISPLAY

See our windows now : Repairs a Speciality

FOR CLOTHES BEARING  
THE STAMP  
OF QUALITY—VISIT . . .

*Ernest. Wippenum*  
LTD.

TEL. 6152

**45 HIGH STREET  
STOCKTON-ON-TEES**

TEL. 6152

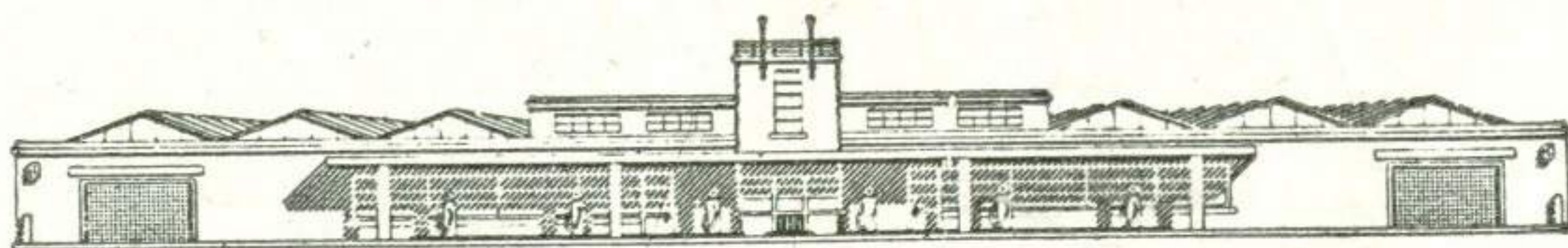
Agents for CHESTER BARRIE, DAKS and SUMRIE CLOTHES ———  
BURBERRY'S RAINCOATS . CHRISTY & WOODROW HATS ———

# GLOBE THEATRE STOCKTON-ON-TEES

Box Office Telephone : 66646

Proprietors ..... ASSOCIATED BRITISH CINEMAS LIMITED  
Managing Director ..... D. J. GOODLATTE  
Director and General Manager ..... W. CARTLIDGE  
Resident Manager ..... G. CHADWICK  
Assistant Manager ..... G. G. K. BROOK

MORRIS . M.G. . WOLSELEY . MORRIS COMMERCIAL . STANDARD . TRIUMPH



*Wheatleys*

TELEPHONE 65161 (2 lines)

TOWER GARAGE YARM-LANE STOCKTON-ON-TEES



**IRIS VILLIERS**, the eminent B.B.C. Soprano, who speaks and sings the role of "Maria Ziegler" in Britain's longest running Ice Show—**IVOR NOVELLO'S "THE DANCING YEARS ON ICE."**

# GLOBE THEATRE

---

## STOCKTON

---

HOLIDAY ON ICE (Great Britain) LTD.

present

# THE DANCING YEARS ON ICE

The Famous Musical Play  
Written & Composed by  
**IVOR NOVELLO**

---

Directed and Produced by **Gerald Palmer**

Choreography by **Beatrice Livesey**

Decor by **Edward Delany**

Adaptation and Lyrics by **Christopher Hassall**

Costumes designed by **Anthony Holland**

Music orchestrated and arranged by **Reginald Swinney**

# GLOBE THEATRE

# STOCKTON-ON-TEES

Characters in their order of appearance :

	On the Ice	Their Voices
The Night Watchman .....	RON FRENCH	KEVIN WOODS
Hatti .....	GLADYS IVES	JOY CANNON
Grete .....	ANNE ROGERS	SYLVIA VOWLES
Rudj Kleber .....	MICHAEL WALKER	Spoken by JAMES MILNER Sung by KEVIN WOODS KEVIN WOODS
An Officer .....	JOHN WILTSHIRE	PETER MARLOWE
Franzel .....	EDDIE WARD	IRIS VILLIERS
Maria Zeigler .....	LUBA NATOVA	ERNEST DELL
Prince Charles Metterling	DUDLEY CARVER	EILEEN CAREY
Cacilie Kurt .....	JOSIE CORDREY	

## Characters in the Operette "Lorelei"

Lorelei .....	LUBA NATOVA	IRIS VILLIERS
The Duchess .....	JOSIE CORDREY	EILEEN CAREY
Vladimir .....	JOHN WILTSHIRE	KEVIN WOODS

## Synopsis of Scenes

OVERTURE—"The Dancing Years" ..... Novello

Orchestra under the Direction of DUDLEY HARE

## ACT ONE

Scene 1. .... The Garden of an Inn outside Vienna  
Scene 2. .... A Street in Vienna  
Scene 3. The Stage of the Theatre An der Wien during a rehearsal  
of "Lorelei" (one month later)

INTERLUDE : "Burlesque"—Ives and French

Scene 4. The Foyer of the Theatre before the Premiere of "Lorelei"

Scene 5. The Stage of the Theatre during the performance of  
"Lorelei"

The scene is a soiree given by the Duchess of Blauvelt-Stremnitz to celebrate the return to the Ducal Court of her son Vladimir after his unfortunate love affair with the fascinating "Lorelei"

Scene 6. .... Outside the Theatre after the Performance

Scene 7. The terrace of Prince Charles Metterling's Mansion in  
Vienna

— I N T E R V A L —

## ACT TWO

Scene 1. .... A Chalet in the Tyrol (three years later)

INTERLUDE : "We'll Gather Lilacs"—Sung by Iris Villiers

Scene 2. .... A period Fete at the Belvedere Palace, Vienna  
(The next evening)

INTERLUDE—The Harvards

Scene 3. .... A Street in Vienna

Scene 4. .... The Garden of an Inn outside Vienna

Scene 5. .... Vienna en Fete

The Choral Background by THE MAPLE LEAF CHOIR,  
directed by Frederick Gommer and Reginald Swinney

Assistant to the Choreographer—John Worrow

Scenery and Properties by Theatre & Exhibition Contractors Ltd., 17 Stratton  
Street, London, W.1. Engineering Works by Hall Stage Equipment. Lighting  
Effects by Strand Electric & Engineering Company Ltd. All Principals' Costumes  
by B. J. Simmons & Co. Ltd. All Chorus Costumes by Theatrical Models Ltd.  
Characters Costumes by Dukes (Wardour Street) Ltd. Wigs by Nathanwigs.

*Administrative Staff for Holiday on Ice (Great Britain) Ltd.*

Executive Director .....	GERALD PALMER
Executive Choreographer .....	BEATRICE LIVESSEY
Production Manager .....	JOUIS BARBER
Musical Adviser .....	REGINALD SWINNEY
Publicity Manager .....	ALAN WEEKS
Technical Adviser .....	TOM POVEY
Wardrobe Supervisor .....	GEORGE PRINCE
Chief Refrigeration Engineer .....	O. MATTHEWS

*For "The Dancing Years on Ice" Company*

General Manager and Stage Director .....	WILLIAM ROYSTON
Stage Manager .....	RON HACKNEY
Musical Director .....	DUDLEY HARE

The Regulations of the Watch Committee provide that : (a) The public may leave at the end of the performance by all exits, and all exit doors must at that time be open. Note—The Theatre can be emptied very quickly if the audience leave in an orderly manner. (b) All gangways, passages, staircases and exits must be kept entirely free from any obstructions. (c) Persons shall not be permitted to stand or sit in any of the intersecting gangways, or stand in any unseated place in the auditorium unless standing in such place has been specially allowed by the Watch Committee. (d) The safety curtain must be lowered at an early period during each performance so as to ensure its being in proper working order.

# SIX THRILLING SCENES FROM



# "THE DANCING YEARS" ON ICE





TELEPHONE 67616

# LESLIE BROWN

The Record Shop and Recording Studio  
95 HIGH STREET, STOCKTON-ON-TEES



*The Hallmark of Quality*  
**ACCREDITED DEALER**

— O —  
— ALWAYS IN STOCK —

Records from all the "Globe" stage and film presentations

Ample car parking facilities available:—Church Road Car Park (50 yards from Theatre) ; High Street and adjacent streets.

All bus stops are within easy reach of the Theatre.

"On Call" service for Doctors, Nurses, etc. Please leave your name and seat number at Box Office.

The Sales Kiosk in the main entrance is open during the intervals for the sale of cigarettes and confectionery.

Photographing in the Theatre is forbidden. All Productions are copyright and the unauthorised photographing of scenes, incidents and acts is illegal.

The Management reserves the right to refuse admission to the Theatre and to change, vary or omit, without previous notice, any item of the Programme.

CARPETS . RUGS . RUNNERS . STAIR CARPETS, Etc.

● DIRECT TO THE PUBLIC ●

Crass & Terry Ltd.

## CARPET WAREHOUSE

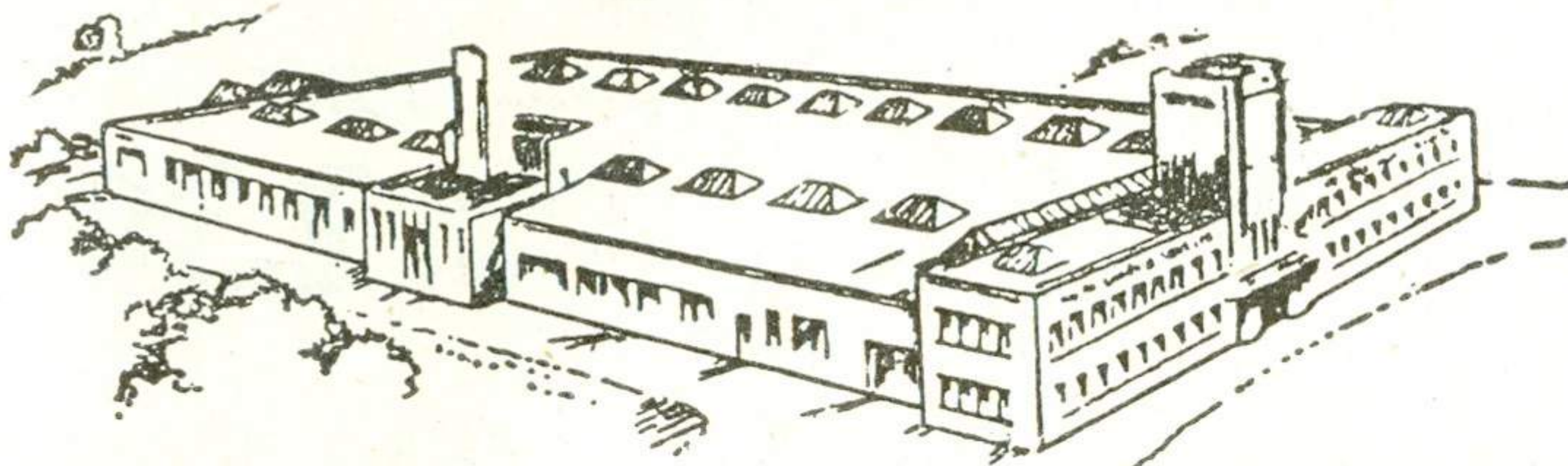
Telephones : 66826 & 67618

Branches at SUNDERLAND & MIDDLESBROUGH

**15/17 YARM LANE . STOCKTON-ON-TEES**

**SPRING INTERIORS & BEDDING . COMPLETE RANGE IN STOCK**

# SPARK'S QUALITY CAKES



From Our Retail Branches and Good Grocers Throughout  
Co. Durham and North Yorkshire

Head Office : Daylight Bakery, Stockton-on-Tees — Telephone : 67304

Coming to the GLOBE, Monday, May 21, 1956

**"BRILLIANT"**  
- DAILY HERALD

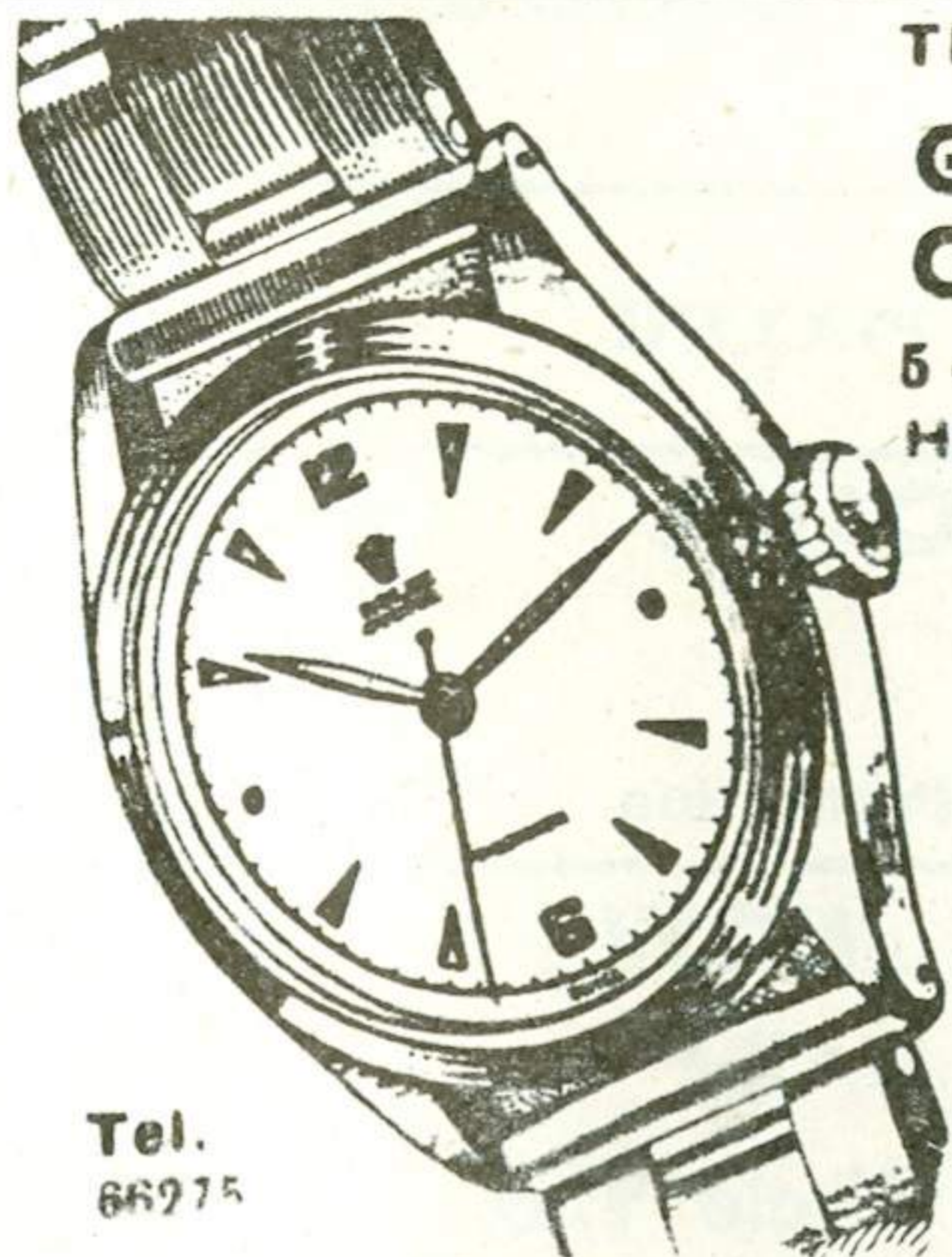
**"SENSATIONAL"**  
- DAILY MIRROR

**"COLOSSAL"**  
- DAILY SKETCH

# HELEN OF TROY (U)

STARRING  
**ROSSANA PODESTA • JACK SERNAS • CEDRIC HARDWICKE**  
CINEMASCOPE AND WARNERCOLOR

**MICHAEL MEDWIN A MAN ON THE BEACH (U)**  
**DONALD WOLFIT EASTMAN COLOUR**



Tel.  
66275

## THE NORTHERN GOLDSMITHS C O M P A N Y

5-7 Victoria Buildings  
High St., Stockton-on-Tees

for



# ROLEX

## WATCHES

Every watch covered by our "all in" two-year guarantee and free insurance against loss.



Ask  
for  
Free  
Catalogue

# OUR NEXT BIG STAGE SHOW

ONE WEEK

COMMENCING \_\_\_\_\_ JUNE 11, 1956

Once Nightly at **7.15** P.M. | Matinee Saturday **2.30** P.M.

## THE SADLER'S WELLS OPERA COMPANY

presents

MONDAY JUNE 11	<b>CAVALLERIA RUSTICANA</b> MASCAGNI & <b>I PAGLIACCI</b> LEONCAVALLO—New Production	7.15
TUESDAY JUNE 12	<b>LA BOHEME</b> PÜCCINI	7.15
WED'DAY JUNE 13	<b>RIGOLETTO</b> VERDI—New Production	7.15
THURSDAY JUNE 14	<b>TOSCA</b> PUCCINI	7.15
FRIDAY JUNE 15	<b>THE BARTERED BRIDE</b> SMETANA	7.15
SATURDAY JUNE 16	<b>LA BOHEME</b> PUCCINI	2.30
SATURDAY JUNE 16	<b>CAVALLERIA RUSTICANA</b> MASCAGNI & <b>I PAGLIACCI</b> LEONCAVALLO—New Production	7.15

**BOOK YOUR SEATS NOW!**

BOX OFFICE OPEN DAILY

Stalls 9/6, 7/6, 4/6 ————— Circle 9/6, 7/6, 4/6