

GLOBE THEATRE STOCKTON-ON-TEES

EMILE LITTLER'S

"LOVE FROM JUDY XXXX"

NEARLY 2 YEARS IN LONDON



By ERIC MASCHWITZ and JEAN WEBSTER
Lyrics by HUGH MARTIN and JACK GRAY

Music by HUGH MARTIN
Choreography by PAULINE GRANT

MONDAY, 28th FEBRUARY, TO SATURDAY, 5th MARCH, 1955

Programme Sixpence

TAYLOR (MIDDLESBROUGH) LTD.

WHOLESALE MEAT DEPOT

Tel. Stockton 66334

(Behind Globe Theatre)

Tel. Stockton 66334

ENGLISH BEEF, PORK, LAMB

— SHIPPING SUPPLIED —

Retail Branches throughout Tees-side

Always

"TOP OF THE BILL"

CAMERON'S
CORONATION
ALE

OBTAINABLE EVERYWHERE IN THE NORTH-EAST

TEL. 68641

TEL. 68641

H. P. TYLER LTD.

39 HIGH STREET . STOCKTON-ON-TEES

—:—:—
Family **FOOTWEAR** Specialists
—:—:—

EARLY SPRING STYLES NOW ON DISPLAY

See our windows now : Repairs a Speciality

FOR CLOTHES BEARING
THE STAMP
OF QUALITY—VISIT . . .

Ernest. Wippenus
LTD.

TEL. 6152

**45 HIGH STREET
STOCKTON-ON-TEES**

TEL. 6152

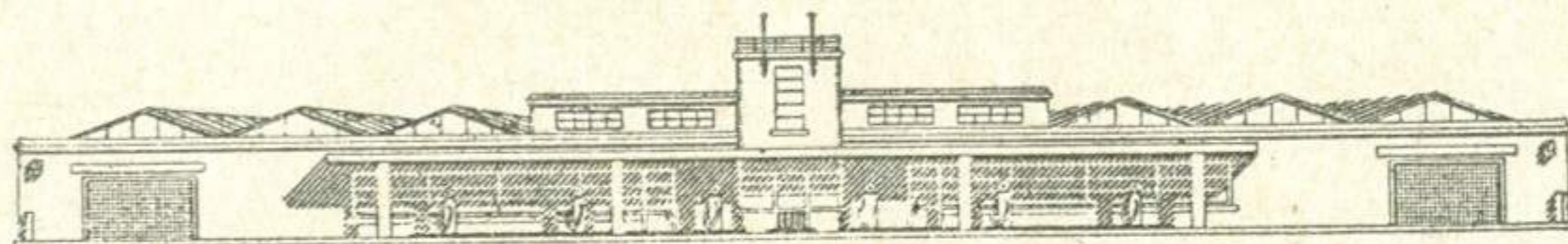
Agents for CHESTER BARRIE, DAKS and SUMRIE CLOTHES
BURBERRY'S RAINCOATS . CHRISTY & WOODROW HATS

GLOBE THEATRE STOCKTON-ON-TEES

Box Office Telephone : 66646

Proprietors ASSOCIATED BRITISH CINEMAS LIMITED
Managing Director D. J. GOODLATTE
General Manager W. CARTLIDGE
Resident Manager G. CHADWICK
Assistant Manager D. S. COPELAND
Stage Manager O. PRYCE
Electrician G. W. GODDEN

MORRIS . M.G. . WOLSELEY . MORRIS COMMERCIAL . STANDARD . TRIUMPH



Wheatleys

TELEPHONE 65161 (2 lines)

TOWER GARAGE YARM-LANE STOCKTON-ON-TEES



JEAN CARSON AS 'JUDY ABBOTT'

IN

EMILE LITTLER'S

"LOVE FROM JUDY"

GLOBE THEATRE . Stockton-on-Tees

EMILE LITTLER'S

LOVE FROM JUDY

Book by ERIC MASCHWITZ and JEAN WEBSTER. Music by HUGH MARTIN.
Lyrics by HUGH MARTIN and JACK GRAY. Directed by CHAS. HICKMAN.



Jerusha Abbott	JEAN CARSON
Sadie Kate	LINDA BACON
Gladiola Murphy	ANNETTE MACDONALD
Mamie	ANTOINETTE MILLER
Loretta	HEATHER LEE
Mrs. Lippett	BETTY BOWDEN
Mrs. Grace Pritchard	JOAN SETON
Cyrus Wykoff	BRIAN FAUBERT
Senator Parsons	DAVID KARRY
Jervis Pendleton	BILL O'CONNOR
Julia Pendleton	DAWN CHAPPLE
Sally McBride	JEANETTE LANDIS
Jimmy McBride	DENNY BETTIS
Gordon McLintock	BLADE WOOD
Butterfly	ADELAIDE HALL
Mrs. Pendleton	BETTY BOWDEN
Mary Lou Wagner	PATRICIA HUNT
Wilberforce	JAMES ANSLEY
Walters	BRIAN FAUBERT
Loulie Jean	PATRICIA HUNT
Don Mize	DAVID KARRY
Ballet Jervis	CLIFTON KING
Ballet Judy	IRENE CLAIRE
Ballet Magnolia	IUNE KONOPASEK
Captain Le Valier	KENNETH ADAMS



GIRL STUDENTS

...
Elsa Bach, Anne Downs, Janet Howse, Joan Lee, Joan Lilley, Jill Martin
Janet Page, Esme Robinson, Brenda Voak, Sylvia Walker, Valerie Warren.



BOY STUDENTS :

Ronnie Bowman, William Campbell, John Edey, Kim Hall, Peter Macallum,
Michael Rayward, David Short.



ORPHANS :

Linda Bacon, Roma Hodson, Heather Lee, Annette Macdonald, Antoinette
Miller, Margaret O'Sullivan

EMILE LITTLER'S

LOVE FROM JUDY

Book by ERIC MASCHWITZ and JEAN WEBSTER. Music by HUGH MARTIN.

Lyrics by HUGH MARTIN and JACK GRAY. Directed by CHAS. HICKMAN.

ACT I

- Scene 1.—New Orleans, Mardi Gras, 1903
- Scene 2.—The Joan Grier Home
- Scene 3.—A Railway Station, some weeks later
- Scene 4.—Fergusson Ladies' College, some months later
- Scene 5.—Under the Magnolia
- Scene 6.—The Campus

ACT II

- Scene 7.—Lock Willow Farm, Summer
- Scene 8.—The Porch at Lock Willow Farm, Autumn
- Scene 9.—Nightmare
- Scene 10.—Jervis Pendleton's Study
- Scene 11.—Finale

Orchestra under the Direction of ARTHUR LOGAN



Production assembled by Physhe. Scenery painted by Alick Johnstone; built by Brunskill & Loveday. Costumes by C. L. Trobridge, Alec Shanks, St. John Roper, Theatrical Models Ltd., Chinery & Wright, Lehcare, Joseph Roth. Men's clothes by Morris Angel, H. Sparrow, and D. A. and A. M. Angel Ltd. Hats by Messrs. Dunn, Sheeta and Corne. Shoes by Gamba and Freed. Wigs by Nathanwigs and Wig Creations. Tennis rackets by H. J. Gray & Sons, Ltd. Ukelele banjos by G. Scarth Ltd. Properties by Richard Dendy. Wardrobe cleaned with "Lux." Nylon stockings by Kayser Bondor. Skipping Ropes by Whiteley Products Ltd. Virginia Cigarettes by Abdulla.



For "LOVE FROM JUDY":

- Manager FREDERIC TOMLIN
- Stage Manager EDWARD LAW
- Assistant Stage Manager GEOFFREY MILNES
- Ballet Mistress IRENE CLAIRE
- Master Carpenter WILLIAM THUMS
- Property Master WILLIAM ANDERSON
- Wardrobe MARY MILLER



For all EMILE LITTLER ENTERPRISES:

- General Manager IAN PAUL
- Production Supervisor P. L. WRIGHT
- Public Relations PATRICK SELBY

The Regulations of the Watch Committee provide that:— (a) The public may leave at the end of the performance by all exits, and all exit doors must at that time be open. Note—The Theatre can be emptied very quickly if the audience leave in an orderly manner. (b) All gangways, passages, staircases and exits must be kept entirely free from any obstructions. (c) Persons shall

MUSICAL NUMBERS

ACT I

- 1. "Mardi Gras" THE BOYS AND GIRLS
- 2. "I Never Dream When I'm Asleep" JUDY
- 3. "It's Great to be an Orphan" JUDY AND ORPHANS
- 4. "Goin' Back to School" THE BOYS AND GIRLS
- 5. "Dumb-Dumb-Dumb" SALLY, GORDON AND GIRLS
- 6. "It's Better Rich" GRACE
- 7. "Daddy-Long-Legs" JUDY
- 8. "Love From Judy" JERVIS
- 9. "A Touch of Voodoo" BUTTERFLY, JIMMY AND BOYS
- 10. "Skipping Rope Hornpipe" JULIA AND GIRLS
- 11. "Here We Are" SALLY, BOYS AND GIRLS
- 12. "Go and Get Your Old Banjo" JUDY, BOYS AND GIRLS

ACT II

- 13. "Here We Are" (Reprise) BOYS AND GIRLS, GRACE AND LOULIE JEAN
- 14. "Kind to Animals" BUTTERFLY
- 15. "Ain't Gonna Marry" (Based on traditional American Folk Songs) JIMMY, WILBERFORCE, SALLY, JULIA, DON, BUTTERFLY, BOYS AND GIRLS
- 16. "My True Love" JERVIS
- 17. "Ain't Gonna Marry" (Reprise) BUTTERFLY
- 18. "What Do I see in You." JIMMY AND JULIA
(Dance arranged by Walter Crisham)
- 19. Ballet (Music by Phil Green)
- 20. "Love From Judy" (Reprise) JERVIS
- 21. "Go and Get Your Old Banjo" (Reprise) BOYS AND GIRLS
- 22. Finale THE COMPANY



MUSIC OF THE SHOW: "Love From Judy," "My True Love," "Daddy Long Legs," "Go and Get Your Old Banjo," Piano Selection, and the Complete Vocal Score are published by Chappell & Co. Ltd.

not be permitted to stand or sit in any of the intersecting gangways, or stand in any unseated place in the auditorium unless standing in such space has been specially allowed by the Watch Committee. (d) The safety curtain must be lowered at an early period during each performance so as to ensure its being in proper working order.

SCENES FROM EMILE LITTLER'S "LOVE FROM JUDY"



" LOVE FROM JUDY " : DIRECT FROM LONDON'S WEST END



TELEPHONE 67616

LESLIE BROWN

The Record Shop and Recording Studio
95 HIGH STREET, STOCKTON-ON-TEES



The Hallmark of Quality
ACCREDITED DEALER

— ALWAYS IN STOCK —

Records from all the "Globe" stage and film presentations

Ample car parking facilities available :—Church Road Car Park (50 yards from Theatre) ; High Street and adjacent streets.

All bus stops are within easy reach of the Theatre.

"On Call" service for Doctors, Nurses, etc. Please leave your name and seat number at Box Office.

The Sales Kiosk in the main entrance is open during the intervals for the sale of cigarettes and confectionery.

Photographing in the Theatre is forbidden. All Productions are copyright and the unauthorised photographing of scenes, incidents and acts is illegal.

The Management reserves the right to refuse admission to the Theatre and to change, vary or omit, without previous notice, any item of the Programme.

CARPETS . RUGS . RUNNERS . STAIR CARPETS, Etc.

● DIRECT TO THE PUBLIC ●

Crass & Terry Ltd.

CARPET WAREHOUSE

Telephones : 66826 & 67618

Branches at SUNDERLAND & MIDDLESBROUGH

15/17 YARM LANE . STOCKTON-ON-TEES

SPRING INTERIORS & BEDDING . COMPLETE RANGE IN STOCK

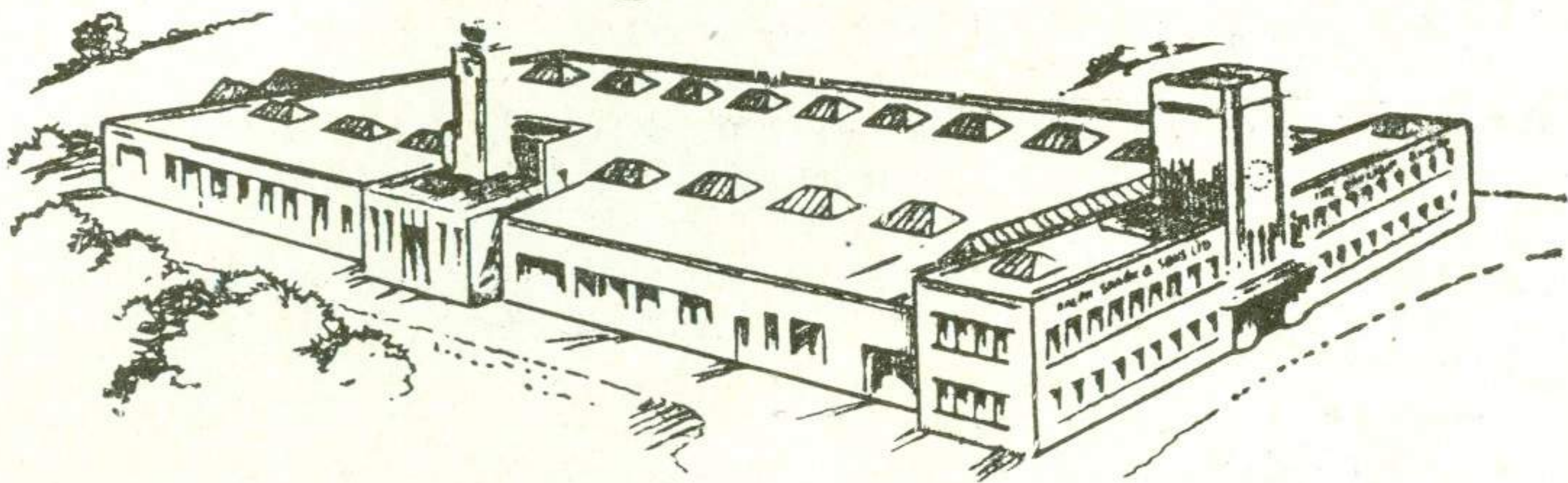
. . . for Fashions with a Future

Books (Fashions) Ltd.

114 HIGH STREET, STOCKTON

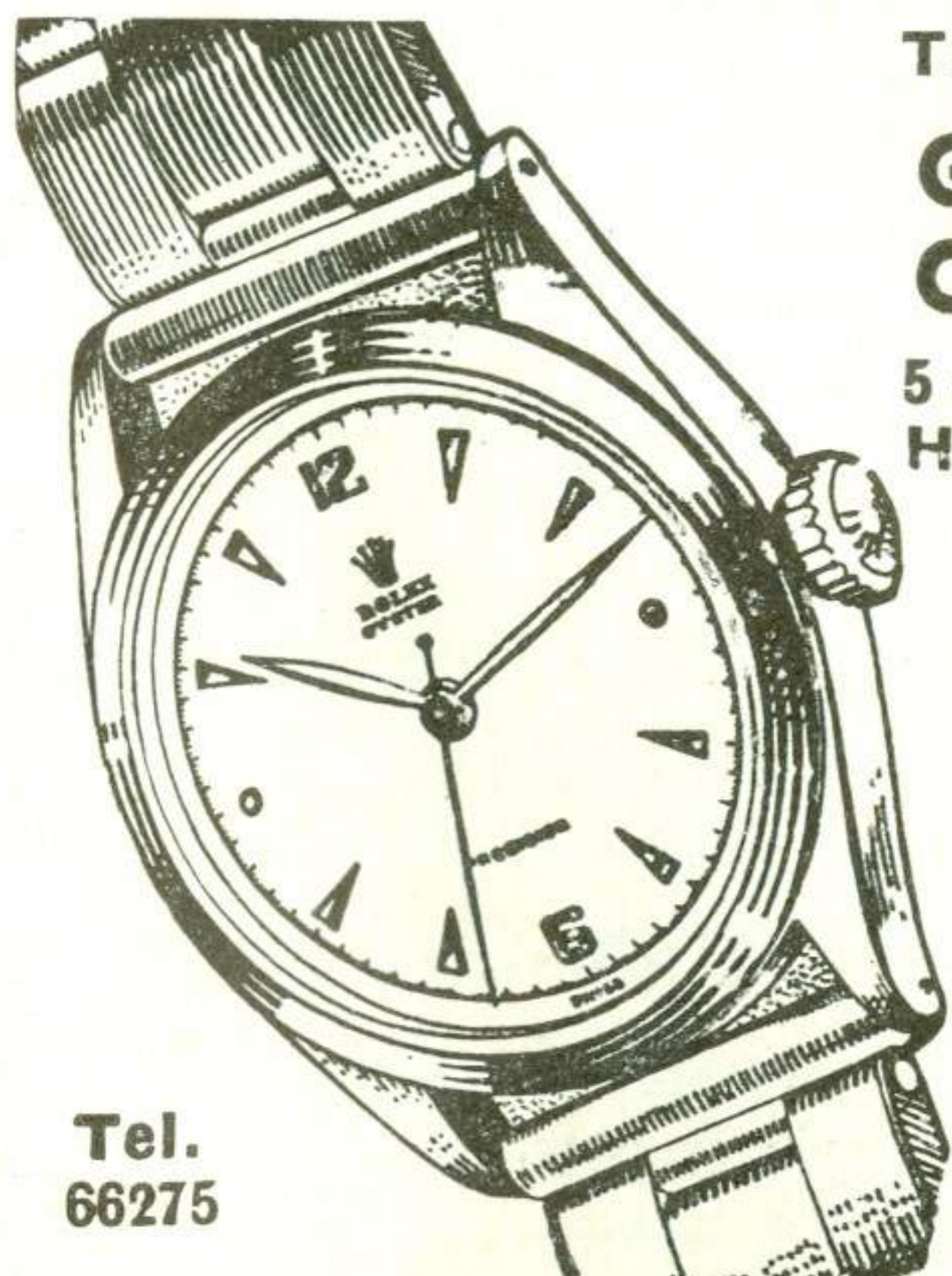
77 LINTHORPE ROAD, MIDDLESBROUGH

SPARK'S QUALITY CAKES



From Our Retail Branches and Good Grocers Throughout
Co. Durham and North Yorkshire

Head Office : Daylight Bakery, Stockton-on-Tees ——— Telephone : 67304



Tel.
66275

THE NORTHERN GOLDSMITHS COMPANY

5-7 Victoria Buildings
High St., Stockton-on-Tees

for



ROLEX

WATCHES

Every watch covered by our "all
in" two-year guarantee and free
insurance against loss.



Ask
for
Free
Catalogue

H. CLARKE, M.P.S.

DISPENSING & PHOTOGRAPHIC CHEMIST

153 HIGH STREET — and — 124 DURHAM ROAD
STOCKTON - ON - TEES

Telephone 66177

M A K E C L A R K E Y O U R C H E M I S T

OUR NEXT BIG STAGE SHOW

MONDAY, 21st MARCH, 1955, FOR ONE WEEK

Once Nightly at 7.15 Matinees Wednesday and Saturday at 2.30



SADLER'S WELLS THEATRE BALLET

BOOK NOW ! Box Office open daily 10 a.m. to 7 p.m.

BURTONS (STOCKTON) L^{TD.}

WELLINGTON STREET

STOCKTON-ON-TEES

High class fish, game, poultry : Fruit & vegetable salesmen

TELEPHONE 65246

ESTABLISHED 1866

DELIVERY TO ALL DISTRICTS