

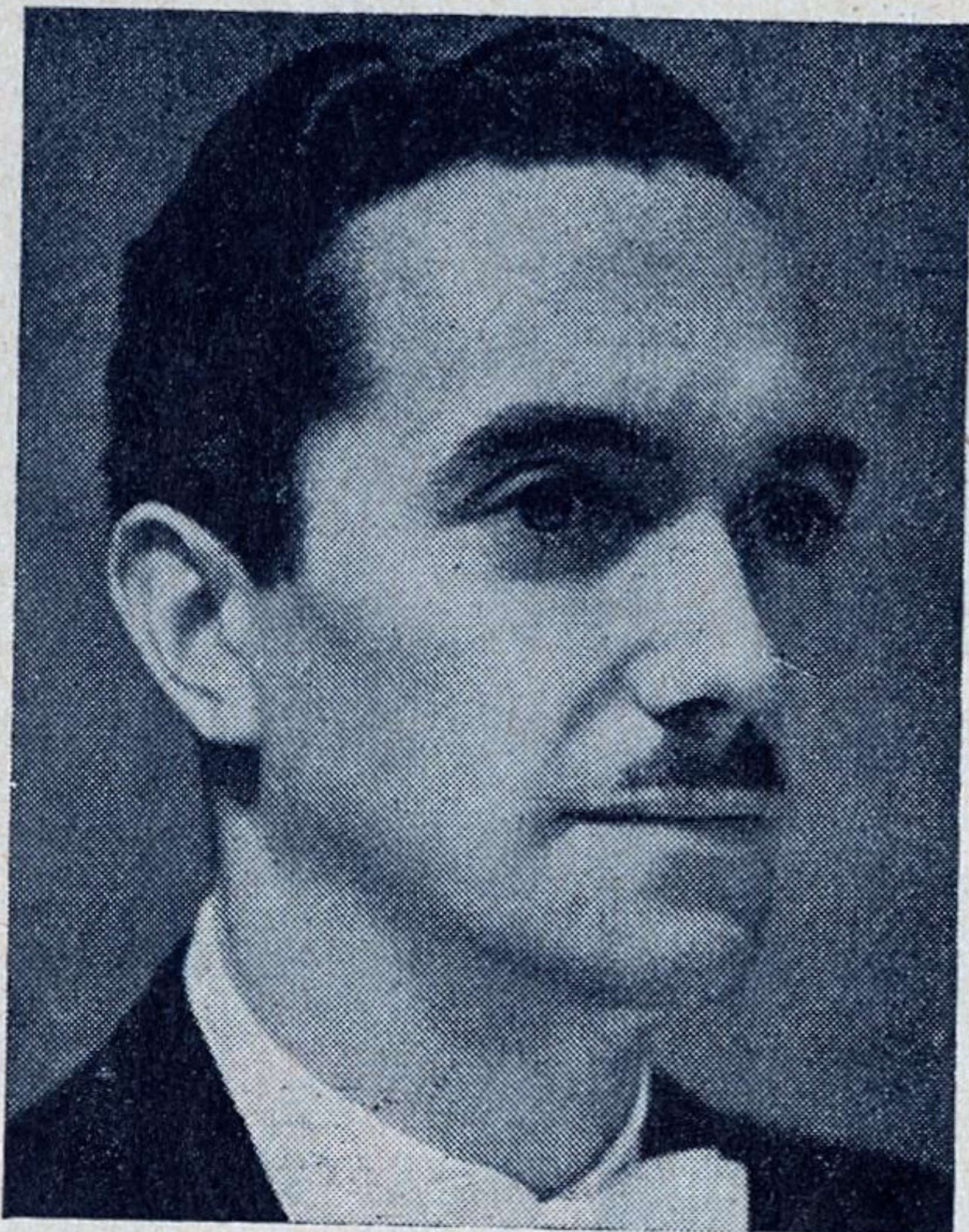
GLOBE  
THEATRE  
STOCKTON-ON-TEES  
(AN A.B.C. THEATRE)

ON THE STAGE

*The*  
**D'OLLY CARTIE**  
*Opera*  
*Company*

MON. MARCH 15<sup>th</sup>  
FOR TWO WEEKS  
SIXPENCE





## MANAGER'S CHAT

Dear Patrons,

A special expression of thanks to all from whom I received such appreciative letters of the Sadler's Wells Theatre Ballet. Wonderful week, indeed!

With the visit of the D'Oyly Carte Opera Company we complete the full range of live entertainment, the only exception being straight plays which are more suited to small, permanent theatres. Because Gilbert and Sullivan operas are so distinct

from all other presentations, it has been rather similar to constructing an interesting and pleasurable jig-saw again and again with one piece missing. Now the piece is in position and the pattern whole. Opera, Ballet, Musical Comedy, Variety—all to satisfy different palates. I can promise you there are ambitious plans in store.

Of the immediate future you are well aware. The box office is now open for April 26th week, the Sadler's Wells Opera Company, details of which appear elsewhere in this programme. Incidentally, I predict that the performances of "DIE FLEDERMAUS" (complete version with ballet) will sell out with breathtaking speed. Just a reminder of a rise in prices, as in April last, owing to the removal of three rows of orchestra stalls seats to accommodate the fifty-piece orchestra—an orchestra worthy of patronage in itself.

Then in lighter vein the tremendously popular "OKLAHOMA" on May 24th week. You have really looked forward to this production.

A Star Variety week in June will end the series prior to the holiday season. More particulars next month.

Assuring you of my best services at all times,

Yours sincerely,

RONALD WHITE.

---

## THE "GLOBE" EMBRACES ALL THAT IS GOOD IN ENTERTAINMENT

---

All gangways, passages and staircases shall be kept entirely free from chairs or any other obstruction, and no person shall be allowed to sit or stand during any performance or entertainment in such gangways, passages or staircases. The public shall be permitted to leave by all entrance doors after each performance or entertainment. No smoking shall be permitted to take place on the stage except as part of a performance or entertainment. The fireproof curtain to the proscenium opening must be lowered and raised at least once during every performance or entertainment to ensure that it is in proper working order.



GLOBE THEATRE - STOCKTON



THE  
D'OYLY CARTE  
OPERA COMPANY

IN

GILBERT & SULLIVAN  
OPERAS



**FOR TWO WEEKS**  
**COMMENCING MONDAY, MARCH 15th, 1954**

Evenings at 7.15 p.m.

Matinees : Wednesdays and Saturdays at 2.30 p.m.





GLOBE THEATRE . STOCKTON - ON - TEES

Manager : RONALD WHITE . . . . . Telephone 66646

THE D'OYLY CARTE OPERA COMPANY IN GILBERT & SULLIVAN OPERAS

Saturday, Matinee and Evening, 27th March

THE GONDOLIERS

or THE KING OF BARATARIA

Written by W. S. GILBERT . Composed by ARTHUR SULLIVAN

The Duke of Plaza-Toro (a Grandee of Spain)	PETER PRATT
Luiz (his Attendant) . . . . .	JEFFREY SKITCH
Don Alhambra Del Bolero (the Grand Inquisitor)	FISHER MORGAN
Marco Palmieri . . . . .	NEVILLE GRIFFITHS
Giuseppe Palmieri . . . . .	ALAN STYLER
Antonio . . . . .	JOHN REED
Francesco . . . . .	HERBERT NEWBY
Giorgio . . . . .	TREVOR HILLS
Annibale . . . . .	JOHN REED
The Duchess of Plaza-Toro . . . . .	ANN DRUMMOND-GRANT
Casilda (her Daughter) . . . . .	TATIANA PRESTON
Gianetta . . . . .	MURIEL HARDING
Tessa . . . . .	JOYCE WRIGHT
Fiametta . . . . .	CYNTHIA MOREY
Vittoria . . . . .	CEINWEN JONES
Guilia . . . . .	LORNA POBJOY
Inez (the King's Foster-Mother) . . . . .	SYBIL WILLEY
Chorus of Gondoliers, Contadine, Men-at-Arms, Heralds and Pages	

ACT I

VENICE

ACT II

PAVILION IN THE PALACE OF BARATARIA

Interval of Fifteen Minutes between the Acts

(An Interval of three months is supposed to elapse between Acts I and II)

Orchestra under the direction of ISIDORE GODFREY

Conductor, Saturday Matinee, March 27th, WILLIAM COX-IFE

There are some instances where encores interfere with the continuity of the story and the audience is asked not to break this continuity by insisting on encores when the action and dialogue is being carried straight on by the artistes.

Book of Words may be obtained from the Attendants, price 2s.

KINDLY REFRAIN FROM SMOKING

The taking of Photographs in the Theatre is forbidden

Business Manager . . . . .	For BRIDGET D'OYLY CARTE	..... BRUCE WORSLEY
Assistant Manager . . . . .		..... DAVID PALMER
Musical Director . . . . .		..... ISIDORE GODFREY
Assistant Musical Director and Chorus Master . . . . .		..... WILLIAM COX-IFE
Director of Productions . . . . .		..... ROBERT GIBSON
Stage Manager . . . . .		..... JEROME STEPHENS
Assistant Stage Manager . . . . .		..... NORMAN MEADMORE





**Tatiana Preston as "Yum-Yum" in "The Mikado"**



**Peter Pratt as "Jack Point" in "The Yeomen of the Guard"**



**Peter Pratt as "Ko-Ko" in "The Mikado"**



**Joyce Wright as "Tessa" in "The Gondoliers"**



**Neville Griffiths as "Nanki-Poo" in "The Mikado"**



**Leonard Osborn as "Earl Tolloller" in "Iolanthe"**





**Donald Adams as "Pirate King" in "The Pirates of Penzance"**



**Jeffrey Skitch as "Archibald Grosvenor" in "Patience"**



**Peter Pratt as "Sir Joseph Porter" in "H.M.S. Pinafore"**



**Alan Styler as "Counsel" in "Trial by Jury"**



**Fisher Morgan as "The Judge" in "Trial by Jury"**



**Muriel Harding as "Mabel" in "The Pirates of Penzance"**



# **OUR NEXT BIG STAGE SHOW**

**ONE WEEK**

**COMMENCING** \_\_\_\_\_ **26th APRIL, 1954**

Once Nightly at **7.15** P.M. | Matinee Saturday **2.30** P.M.

THE  
**SADLER'S WELLS  
OPERA COMPANY**

presents

<b>MONDAY APRIL 26</b>	<b>CARMEN</b>	<b>7.15</b>
<b>TUESDAY APRIL 27</b>	<b>DIE FLEDERMAUS</b>	<b>7.15</b>
<b>WED'DAY APRIL 28</b>	<b>THE MARRIAGE OF FIGARO</b>	<b>7.15</b>
<b>THURSDAY APRIL 29</b>	<b>LA TRAVIATA</b>	<b>7.15</b>
<b>FRIDAY APRIL 30</b>	<b>LA BOHEME</b>	<b>7.15</b>
<b>SATURDAY MAY 1</b>	<b>DIE FLEDERMAUS</b>	<b>2.30 &amp; 7.15</b>

**BOOK YOUR SEATS NOW !**

BOX OFFICE OPEN DAILY : 10.30 a.m. to 7.0 p.m.  
STALLS 9/6, 7/6, 4/6 ——— CIRCLE 9/6, 7/6, 3/6