

# Hippodrome

## STOCKTON

"WHERE EVERYBODY GOES."

Directors—  
Chas. P. Metcalfe  
Harry B. Metcalfe

Resident Manager—  
T. Eric Metcalfe

Phone  
Stockton 66048

---

# VARIETY, MUSICAL COMEDY AND REPERTORY

---

### NOTES TO PATRONS.

Booking Office open daily : 10-30 a.m. to 1 p.m. — 2-30 p.m.  
to 5 p.m. — 6-45 p.m. to 7-30 p.m.

Telephone Bookings must be claimed 15 minutes before rise of curtain.

Telephone Bookings for Saturday performances must be claimed by 4-45 p.m. otherwise they are liable to be sold.

The management will not be responsible for the absence of any artiste through illness, etc.

Please occupy your seat before the rise of the curtain.



WHEN YOU ARRANGE YOUR  
THEATRE PARTY DON'T FORGET

# The HOTEL METROPOLE

FOR  
Grills and Dinners

J. W. Cameron & Co.,  
Ltd.,  
Stockton-on-Tees.



WHY NOT  
VISIT

# The New MANDALE HOTEL,

(The first new Hotel to be opened on Tees-side since the war.)

Lanehouse Road, Thornaby

## Consult UPTONS for Television



**YOU ARE  
SURE OF  
THE BEST  
SETS AND  
SERVICE.**

**Branches  
throughout  
Tees-side.**

Week commencing MONDAY, 11th MAY, 1953.

HARRY HANSON presents the Court Players in

## "THE CASE OF THE FRIGHTENED LADY"

By Edgar Wallace.

Characters in order of their appearance :

Police Woman .....	MARIGOLD SHARMAN
Sergeant Ferraby .....	ANTHONY St. JOHN
Sergeant Totty .....	PETER NEWELL
Chief Inspector Tanner .....	J. W. TERRY
Lord Lebanon .....	DAVID WHITAKER
Gilder .....	FRANK MIDDLEMASS
Kelver .....	MICHAEL WARWICK
Brooks .....	HUGH TATE
Lady Lebanon .....	EDNA LANDOR
Miss Rawbane .....	DIANA GLYNN
Aisla Crane .....	JOHANNA BROOKS

The Play produced by DAVID BEECHING. Settings designed and executed by KENNETH BROCKLESS.

### SYNOPSIS OF SCENES :

- ACT 1. Chief Inspector Tanner's room at Scotland Yard. Morning.
- ACT 2. Scene 1. The Prior's Hall at Mark's Priory. Late afternoon.  
Scene 2. The same. Night.
- ACT 3. Scene 1. A Bedroom at Mark's Priory. Between two and three  
the next morning.  
Scene 2. The Prior's Hall. A few minutes later.

Manager .....	David Beeching	Stage Manager .....	Nan Daly
Stage Director .....	Hugh Tate	Scenic Designer .....	Kenneth Brockless

For HARRY HANSON.

The Court Players would like to express their appreciation and thanks to the following for their close co-operation  
Antiques by J. H. D. BOUCH, Bank Top, Yarm. Antiques by CHARLES ELSTON, The Connoisseur,  
Bishop Street, Stockton. Electrical Fittings by H. HOWARTH, Bishopton Lane. Modern Furniture by  
SAM'S, Bishopton Lane. Hats by "VOGUE FASHIONS," 40 Yarm Lane. Dressings by TOWNEND'S  
GIFT SHOP, LTD., Dovecot Street. Nylon Stockings by KAYSER-BONDOR. Cigarettes by ABDULLA.

Next Week.—A grand North Country Comedy, "MY WIFE'S LODGER."

## J. CROOKS & SON

The Carpet  
and Lino Warehouse

39/40 HIGH STREET,  
STOCKTON-ON-TEES  
Phone No. 6291

Specialists in

Fitted Carpets & Lino Laying

Estimates given Free

ALWAYS TRY THE  
WAREHOUSE FIRST

## WHY NOT HAVE YOUR BATHROOM MODERNISED THE EASY WAY?

Baths, Basins, Sinks, Ascot  
Heaters & Immersion Heaters,  
Hot Water Installations, etc.

Supplied and Fixed on Easy Payments  
Let us quote you

## WATSON & DUNCAN

65 BISHOPTON LANE  
STOCKTON-ON-TEES

Phone Stockton 67726.

## J. CRIERIE, LTD.,

For Quality Footwear,

4 Wellington St. & 88 High St.,

STOCKTON-ON-TEES.

## A SERVICE FOR MEN

Wedding and Evening Suits on Hire

From

7 Days' Notice Required

ERNEST WINPENNY, LTD.

The Shop for Men

Phone 6152.

45 HIGH STREET.

# ON THE "FLAT" or "OVER THE STICKS"

**No Limit Singles, Doubles or Accumulators**

ARE YOU OR YOUR FRIENDS BEING PAID THE  
FULL AMOUNT WHEN FINDING BIG PRICED  
WINNERS ?

---

**RACING**  
NO LIMIT

LONG ODDS BOOKS OPEN ON ALL PRINCIPAL RACES

**FOOTBALL**  
"CLICK" FIXED ODDS COUPONS

**GREYHOUNDS**

---

You or your friends can open an account by writing to :

**J. S. WHINHAM**  
**100a High Street, Stockton-on-Tees.**  
**Telephone 6391 (5 lines)**

Telegraphic Address : "CLICK, STOCKTON" (same for over 50 years).



**Hippodrome**      **STOCKTON-ON-TEES**

Phone: STOCKTON 66048

**MONDAY, MAY 18th, and during the week**

**6-15 — TWICE NIGHTLY — 8-20**

Box Office open: 10-30 a.m. to 1 p.m.; 2-30 p.m. to 5 p.m.;  
6-45 p.m. to 7-30 p.m.

---

**HARRY HANSON**

presents

**The Court Players**

in

**A HILARIOUS COMEDY SHOW**

**"MY WIFE'S LODGER"**

by **DOMINIC ROCHE**

A grand homely laughter play, packed with fun, perfect  
entertainment for all ages.

---

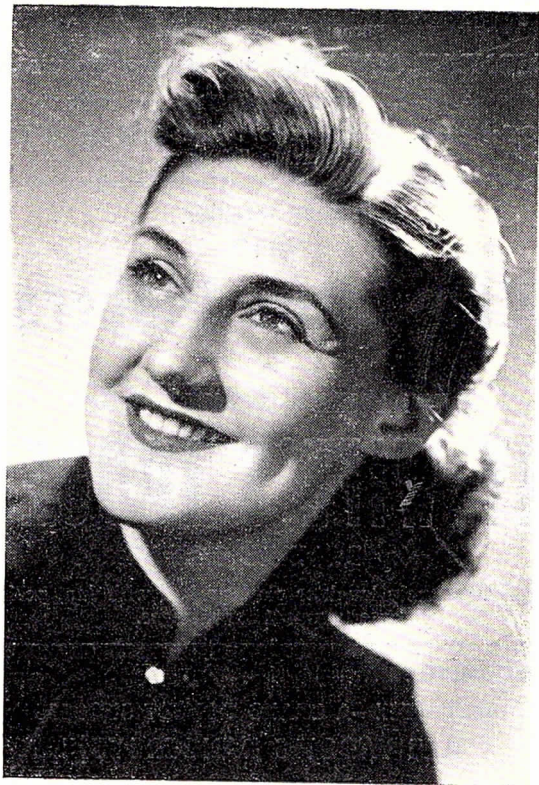
**FORTHCOMING ATTRACTION**

**NEXT WEEK—A GRAND COMEDY SUCCESS**

**"ARE WIDOWS DANGEROUS?"**

---

Plays produced by David Beeching



**EDNA LANDOR**