

Hippodrome

STOCKTON

"WHERE EVERYBODY GOES."

Directors—
Chas. P. Metcalfe
Harry B. Metcalfe

Resident Manager—
T. Eric Metcalfe

Phone
Stockton 66048

VARIETY, MUSICAL COMEDY AND REPERTORY

NOTES TO PATRONS.

Booking Office open daily :—10-30 a.m. to 1 p.m. — 2-30 p.m.
to 5 p.m. — 6-45 p.m. to 7-30 p.m.

Telephone Bookings must be claimed 15 minutes before rise of
curtain.

Telephone Bookings for Saturday performances must be claimed
by 4-45 p.m. otherwise they are liable to be sold.

The management will not be responsible for the absence of any
artiste through illness, etc.

Please occupy your seat before the rise of the curtain.

WHEN YOU ARRANGE YOUR
THEATRE PARTY DON'T FORGET

The
HOTEL METROPOLE
FOR
Grills and Dinners

J. W. Cameron & Co.,
Ltd.,
Stockton-on-Tees.



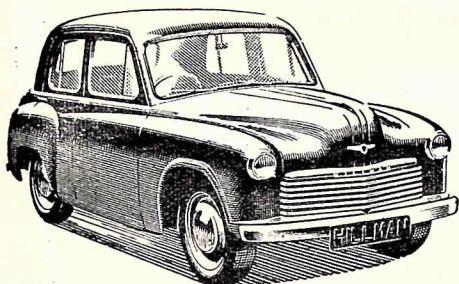
WHY NOT
VISIT

The New
MANDALE HOTEL,
(The first new Hotel to be opened on Tees-side since the war.)
Lanehouse Road, Thornaby

**HUMBER HILLMAN
SUNBEAM - TALBOT
& COMMER OWNERS**

With Factory trained personnel and up to date equipment we offer service facilities that have the full backing and approval of Rootes Group Factories.

In addition we carry a comprehensive stock of spare parts so that your needs, be they for complete overhaul or minor repair, may receive prompt attention.



WIGGINS GARAGE
LIMITED

NORTON ROAD, STOCKTON
PHONE 53237

APPOINTED
SHELL TECALEMIT
SERVICE STATION

Week Commencing MONDAY, 28th AUGUST, 1950.

"THE PATSY"

By Barry Connors.

Cast in order of appearance :

Mrs. William Harrington	BETTY MORTON POWELL
Bill Harrington	FRANK PETTITT
Grace Harrington	ELIZABETH WALTON
Patricia Harrington	ANN MARTIN
Billy Caldwell	DAVID BOOTH
Tony Anderson	HARRY BOWERS

The Play Produced by DOUGLAS NEILL.

Stage Director CAROL HOWARD. (For Harry Hanson) Stage Manager DAVID BOOTH

Set constructed by ROY LUCAS and painted by JOHN PIPER

ACT ONE. The living room of the Harrington Home. Evening.

ACT TWO. The same. The next Monday evening.

ACT THREE. The same. The following Friday night.

The Company would like to express their sincere thanks to the following, for their kind assistance and interest:
Antique furniture and dressings by J. H. D. Bouch, Bank Top, Eaglescliffe, and "The Connoisseur," Bishop Street Stockton-on-Tees.
Light fittings and lamps by Howarth, High Street, Stockton-on-Tees. Natural flower decor by William Strike Ltd., Stockton-on-Tees.
Costumes by William Mutrie & Son, Ltd., Edinburgh. Silverware by Woodroffe & Son Ltd., High Street, Stockton-on-Tees.
Nylon Stockings and Lingerie by Kayser-Bondor. Smiles by Gordon-Moores Cosmetic Tooth Paste. Modern Dressings by Townend, Dovecot Street, Stockton-on-Tees. Modern Furniture by Sam's, Bishopton Lane, Stockton-on-Tees. Cigarettes by Abdulla.

**The Tees-side
Leading Florist**

Fruit and Vegetables Fresh Daily.
Floral Designs of Taste and
Distinction.
Choice Flowers for All Occasions.
Seeds, Bulbs, Shrubs and Trees.
Everything for Your Garden.
Frozen Fruits and Vegetables
Always Available.

All Buses will bring You to
Bishopton Lane.

W. Donald Fewster
5 Bishopton Lane,
Stockton on Tees

Day Phone : 66489
Night Phone : 67705

J. CRIERIE, LTD.,
For Quality Footwear,

4 Wellington St. & 88 High St.,
STOCKTON-ON-TEES.

A SERVICE FOR MEN

Wedding and Evening Suits on Hire

From 7 Days' Notice Required.

ERNEST WINPENNY, LTD.

The Shop for Men

Phone 6152.

45 HIGH STREET.

ON THE "FLAT" or "OVER THE STICKS"

No Limit Singles, Doubles or Accumulators

On Thursday, 17th November, 1949, I laid a £7 Double "Mixed Blessing" won 10/1 and "Devancer" won 100/7 the successful client received the amount of £1,170 for the stake of £7.

ARE YOU OR YOUR FRIENDS BEING PAID THE
FULL AMOUNT WHEN FINDING BIG PRICED
WINNERS ?

RACING

NO LIMIT ——— LONG ODDS
BOOKS OPEN ON ALL PRINCIPLE RACES

FOOTBALL

"CLICK" FIXED ODDS COUPONS

GREYHOUNDS

ALL N.G.R.C. TRACKS

You or your friends can open an account by writing to :

J. S. WHINHAM

100a High Street, Stockton-on-Tees.

Telephone 6391 (5 lines).

Telegraphic Address : "CLICK, STOCKTON." (same for over 50 years)