

# *Aphrodrome* STOCKTON

"WHERE EVERYBODY GOES."

Directors—  
Chas. P. Metcalfe  
Harry B. Metcalfe

Resident Manager—  
T. Eric Metcalfe

Phone  
Stockton 66048

---

## VARIETY, MUSICAL COMEDY AND REPERTORY

---

### NOTES TO PATRONS.

Booking Office open daily :—10-30 a.m. to 1 p.m. — 2-30 p.m.  
to 5 p.m. — 6-45 p.m. to 7-30 p.m.

Telephone Bookings must be claimed 15 minutes before rise of  
curtain.

Telephone Bookings for Saturday performances must be claimed  
by 4-45 p.m. otherwise they are liable to be sold.

The management will not be responsible for the absence of any  
artiste through illness, etc.

**Please occupy your seat before the rise of the curtain.**

WHEN YOU ARRANGE YOUR  
THEATRE PARTY DON'T FORGET

# The HOTEL METROPOLE

FOR  
Grills and Dinners

J. W. Cameron & Co.,  
Ltd.,  
Stockton-on-Tees.



WHY NOT  
VISIT

# The New MANDALE HOTEL,

(The first new Hotel to be opened on Tees-side since the war)

Lanehouse Road, Thornaby

Week Commencing MONDAY, 12th JUNE, 1950.

## "The 10-05 never Stops"

By John Essex.

Characters in order of appearance :

Sally Baines .....	MARY QUINN
Andrew Baines .....	FRANK PETTITT
Trixy Evans .....	ANN MARTIN
Jim Vatcher .....	DOUGLAS NEILL
Philip Ryder .....	HARRY BOWERS
Dan Evans .....	DAVID MILES
Dr. Harrington .....	DAVID BOOTH
Inspector Warren .....	ROBERT HOLLYMAN

The Play produced by DOUGLAS NEILL.

Stage Director CAROL HOWARD. (For Harry Hanson) Stage Manager DAVID BOOTH  
Set constructed by ROY LUCAS and painted by JOHN PIPER

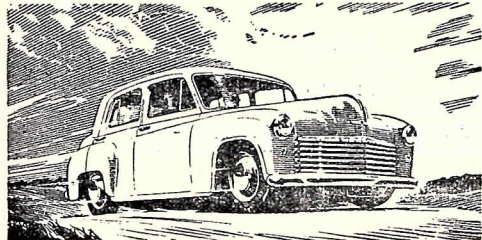
The Scene of the play is laid in the Station Master's house, adjoining  
Gallowsclough Junction.

ACT ONE. A Saturday Night.  
ACT TWO. Wednesday Morning.  
ACT THREE. Wednesday Evening.

Pleasing musical interludes by DON ERNESTO and DENNIS NUTTER on two Grand Pianos  
supported by EVELYN G. DAVIES, Solo Violin, and W. SIMPSON, Clarionet.

The Company would like to express their sincere thanks to the following, for their kind assistance and interest:  
Antique furniture and dressings by J. H. D. Bouch, Bank Top, Eaglescliffe, and "The Connoisseur," Bishop Street Stockton-on-Tees.  
Light fittings and lamps by Howarth, High Street, Stockton-on-Tees. Natural flower decor by William Strike Ltd., Stockton-on-Tees.  
Costumes by William Mutrie & Son, Ltd., Edinburgh. Silverware by Woodroffe & Son Ltd., High Street, Stockton-on-Tees.  
Nylon Stockings and Lingerie by Kayser-Bondor. Smiles by Gordon-Moores Cosmetic Tooth Paste. Modern Furniture by lays Ltd.  
Cigarettes by Abdulla.

**MORE POWER TO THE MINX!**



**NEW FULLY-PROVED PLUS-POWER ENGINE**

gives you **MORE Speed AT THE GETAWAY..**

**MORE Power ON THE HILLS..**

The Hillman Minx... a full size family car famous for its comfort and reliability... gives you still better performance, yet running costs are as low as ever!

**THE HILLMAN**

**MINX MAGNIFICENT**

SALOON · CONVERTIBLE COUPE · ESTATE CAR

SALOON £395

plus purchase tax

A PRODUCT OF THE ROOTES GROUP

**WIGGINS GARAGE**

LIMITED

NORTON ROAD, STOCKTON

PHONE 53237

**APPOINTED**

**SHELL TECALEMIT**

SERVICE STATION

## The Tees-side Leading Florist

Fruit and Vegetables Fresh Daily.  
Floral Designs of Taste and  
Distinction.  
Choice Flowers for All Occasions.  
Seeds, Bulbs, Shrubs and Trees.  
Everything for Your Garden.  
Frozen Fruits and Vegetables  
Always Available.

All Buses will bring You to  
Bishopton Lane.

**W. Donald Fewster**

5 Bishopton Lane,  
Stockton on Tees

Day Phone : 66489  
Night Phone : 67705

**J. CRIERIE, LTD.,**

For Quality Footwear.

4 Wellington St. & 88 High St.,  
STOCKTON-ON-TEES.

**A SERVICE FOR MEN**

*Wedding and Evening Suits on Hire*

From

7 Days' Notice Required.

**ERNEST WINPENNY, LTD.**

The Shop for Men

Phone 6152.

45 HIGH STREET.

# ON THE "FLAT" or "OVER THE STICKS"

## No Limit Singles, Doubles or Accumulators

On Thursday, 17th November, 1949, I laid a £7 Double "Mixed Blessing" won 10/1 and "Devancer" won 100/7 the successful client received the amount of £1,170 for the stake of £7.

ARE YOU OR YOUR FRIENDS BEING PAID THE  
FULL AMOUNT WHEN FINDING BIG PRICED  
WINNERS ?

---

## RACING

NO LIMIT ——— LONG ODDS  
BOOKS OPEN ON ALL PRINCIPLE RACES

## FOOTBALL

"CLICK" FIXED ODDS COUPONS

## GREYHOUNDS

ALL N.G.R.C. TRACKS

---

You or your friends can open an account by writing to :

**J. S. WHINHAM**

**100a High Street, Stockton-on-Tees.**

Telephone 6391 (5 lines).

Telegraphic Address : "CLICK, STOCKTON." (same for over 50 years)