

1/-

1960

LONDON'S
FESTIVAL
BALLET



THE WIDEST SELECTION OF BALLET MUSIC

best performed
and best recorded

IS ON DECCA



LONDON MORNING *Noël Coward*

The London Philharmonic Orchestra

conducted by **Geoffrey Corbett**

M LW 5354

LES SYLPHIDES (*Chopin*)

LA SOURCE excerpts (*Delibes*)

The Paris Conservatoire Orchestra

conducted by **Peter Maag**

S SXL 2044 **M** LXT 5422

GRADUATION BALL (*J. Strauss*)

The New Symphony Orchestra of London

conducted by **Anatol Fistoulari**

M LXT 5372

GISELLE (*Adam*)

The Paris Conservatoire Orchestra

conducted by **Jean Martinon**

S SXL 2128 **M** LXT 5515

SWAN LAKE (*Tchaikovsky*)

S SXL 2107-8 **M** LXT 5501-2

THE NUTCRACKER (*Tchaikovsky*)

S SXL 2092-3 **M** LXT 5493-4

COPPELIA (*Delibes*)

S SXL 2084-5 **M** LXT 5342-3

THE SLEEPING BEAUTY

(*Tchaikovsky*)

S SXL 2160-2 **M** LXT 5532-4

PETRUSHKA (*Stravinsky*)

S SXL 2011 **M** LXT 5425

all by **L'Orchestre de la Suisse Romande**

conducted by **Ernest Ansermet**

Your dealer will be pleased to tell you about the many excerpts available from these recordings and about other ballet music recordings on Decca and associated labels, including several excellent Ace of Clubs discs at only 21/- each. Decca agents will also advise you on how best to equip yourself for enjoying superb naturalism of stereo recording and reproduction. And to keep yourself up to date with all new Decca-group releases, order *Records Magazine* from your dealer or newsagent—now twenty-four pages, and still only 6d. monthly.

DECCA

STEREO OR MONO RECORDS

The Decca Record Company Ltd
Decca House Albert Embankment London SE 11

JULIAN BRAUNSWEG

presents

LONDON'S FESTIVAL BALLET

JEANNETTE MINTY
DEIRDRE O'CONAIRE
JENNIFER ALDERTON
GAYE FULTON

DIANNE RICHARDS
DIANE WESTERMAN
JANET KEDGE
JOAN POTTER

LOUIS GODFREY
RONALD EMBLEN
PETER WHITE

JEAN-PIERRE ALBAN
IVAN BAPTIE

VASSILIE TRUNOFF
JELKO YURESHA
SIMON MOTTRAM

Guest Artistes :

OLGA FERRI (Prima Ballerina, Teatro Colon, Buenos Aires)

VLADIMIR SKOURATOFF

Corps-de-Ballet :

MARY COULSON
VALERIE DAVIE
ANNA DELANY
DIANE ELESMORE

CHRISTINE HUTCHINSON
CHRISTINE JOPE
VICKI KARRAS
SHEILA MELVIN

PRISCILLA MOULDS
STELLA ORTON
GILLIAN SHANE
CHRISTINA STIRLING

ANGELA SYMONDS
ROSEMARY TOOMBS
ROZANNE WARD
SUSAN WINTERTON

CAROLE YULE

MICHEL BOUDOT
HENDRIK DAVEL
JEREMY SUTCLIFFE

ALAN JONES
GALE LAW

RODNEY MACDONALD
BARRY McGRATH
DONALD SWEET

WILLIAM PERRIE
LEO SENN
ALAN WOODWARD

Regisseur General :

LEON WOJCIKOWSKI

Ballet Master :

CHARLES DICKSON

Musical Director :

GEOFFREY CORBETT

FESTIVAL BALLET ORCHESTRA

(Leader : Elizabeth Rajna)

Conductors :

GEOFFREY CORBETT and AUBREY BOWMAN

Administrator :

BENN TOFF



DR. JULIAN BRAUNSWEG—*Director General.*

LONDON'S FESTIVAL BALLET, now entering its twelfth year is once again visiting the British provinces.

Dr. Julian Braunschweg, the Director-General of the Company, is proud and happy to announce the appointment of the great dancer of the Diaghileff Russian Ballet and one of the foremost teachers of to-day, Leon Wojcikowski, as 'Régisseur-General'.

For the first time, London's Festival Ballet has invited two stars of international repute—Olga Ferri, Prima Ballerina of the Teatro Colon, Buenos Aires, and Vladimir Skouratoff, the great French Premier Danseur Etoile, to accompany them as Guest Artists. Both appeared with distinction during the recent London season.

REPERTOIRE

COPPELIA

Ballet in Three Acts by Ch. Nuitter and A. Saint-Leon
 Staged by Harald Lander Music by Leo Delibes
 Décor and Costumes by Jean Denis Maillart
 The original choreography freely adapted and arranged by
 Harald Lander

AUBADE

Choreographic Concerto by Francis Poulenc
 Adapted by Vladimir Skouratoff
 Choreography by Serge Lifar, reproduced by Vladimir Skouratoff

SWAN LAKE (Act II)

Music by Tchaikovsky
 Choreography after Marius Petipa and Ivanov
 Décor by Loudon Sainthill

LES SYLPHIDES

A romantic Ballet in One Act Music by Chopin
 Choreography by Michel Fokine
 Décor by George Kirsta

PRINCE IGOR

Polovtsian Dances from the Opera "Prince Igor"
 Music by Alexander Borodin
 Choreography by Michel Fokine, reproduced by Leon Wojcikowski
 Décor and Costumes after Nicholai Roerich

BOURREE FANTASQUE

Music by Chabrier Choreography by George Balanchine
 The first section, using the score of the title-piece, is an ironic commentary on ballet elegance. The second is a lyric interlude. The third forms a festive finale.

THE NUTCRACKER (Act II)

Choreography by David Lichine
 Music by Tchaikovsky
 Décor and Costumes by Alexandre Benois

ROMEO AND JULIET

Dance-drama for two
 Music by Tchaikovsky ('Fantasy-Overture Romeo and Juliet')
 Choreography by Oleg Briansky
 Décor and Costumes by André Levasseur

GRAND PAS CLASSIQUE

Music by Auber Choreography by Victor Gsovsky

SCHEHERAZADE

Oriental Ballet in One Act Music by Rimsky-Korsakoff
 Choreography by Michel Fokine, reproduced by Leon Wojcikowski
 Décor and Costumes after Leon Bakst

STAFF FOR LONDON'S FESTIVAL BALLET:

Production Manager	Doris Barry	Stage Carpenter	John Berrill
Company Secretary	Reg. Cooper	Property Master	Donald Elliott
Stage Manager	Anthony Gilpin	Wardrobe Master	Arthur Bunce
Assistant Stage Manager	Kenneth Sudell	Secretary	Iris Palmer

London's Festival Ballet Offices—224, Westminster Bridge Road, London, S.E.1.

Telephone: Waterloo 3044/3045.



JEANNETTE MINTY

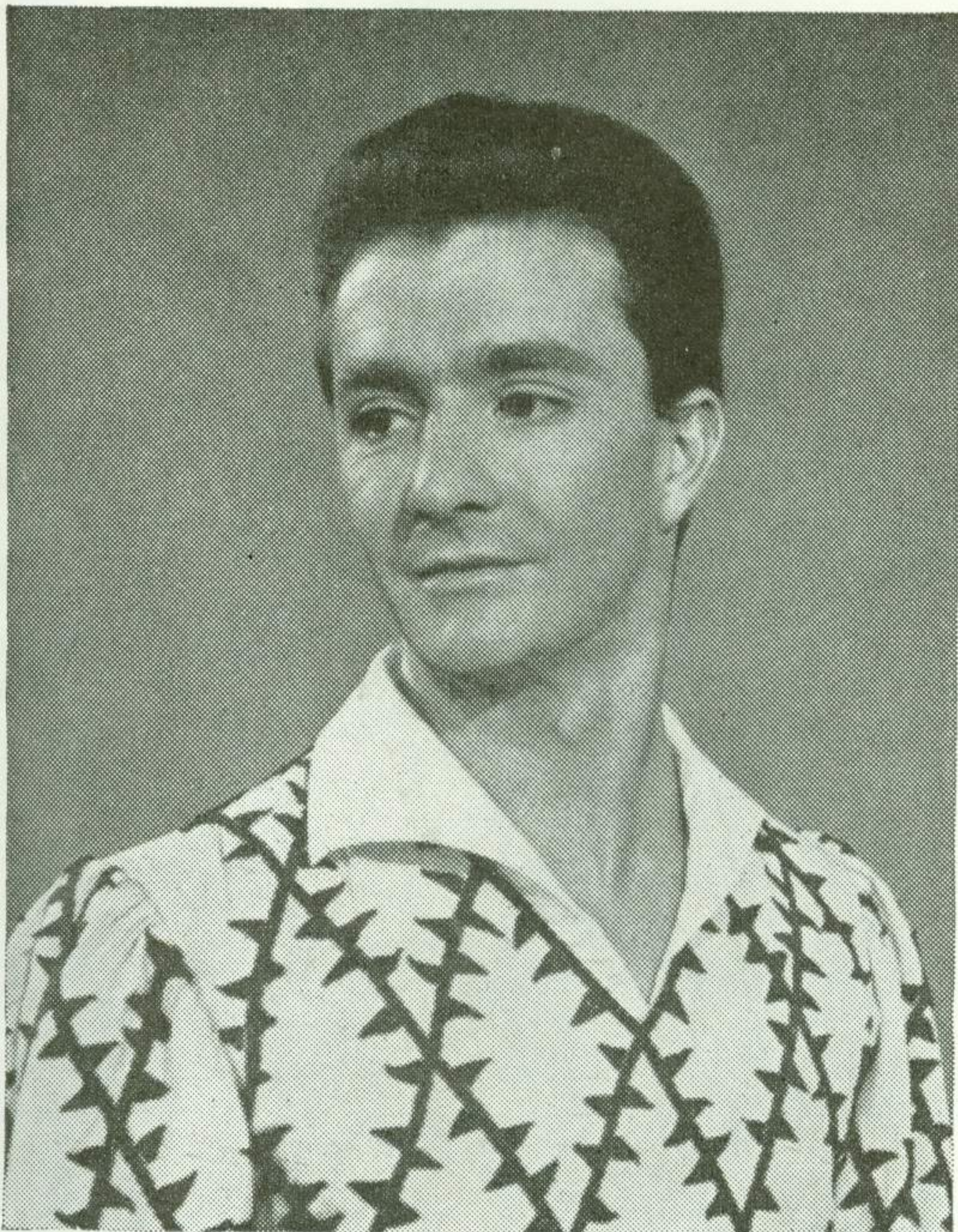


OLGA FERRI



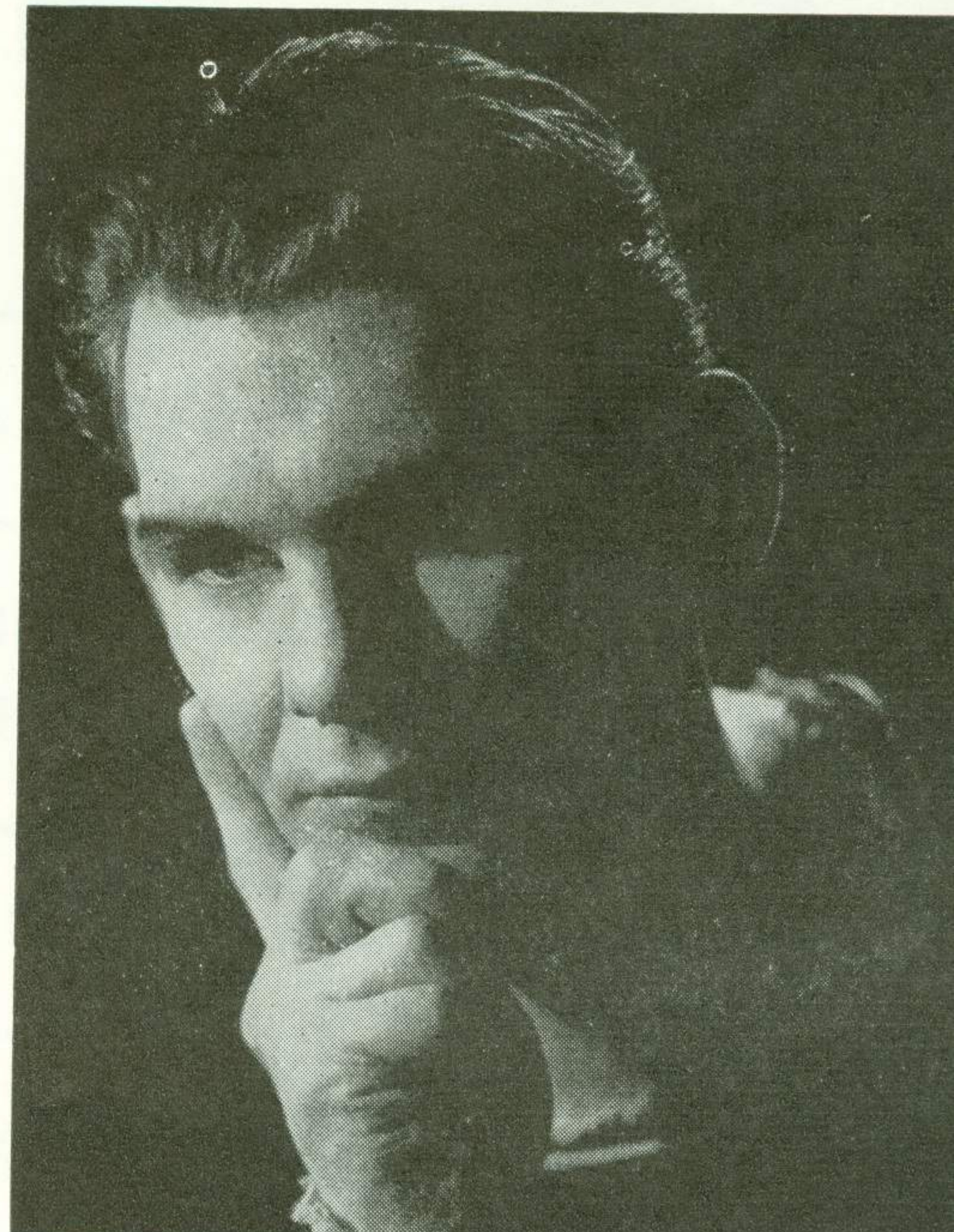
DIANNE RICHARDS

LOUIS GODFREY



VLADIMIR SKOURATOFF

VASSILIE TRUNOFF

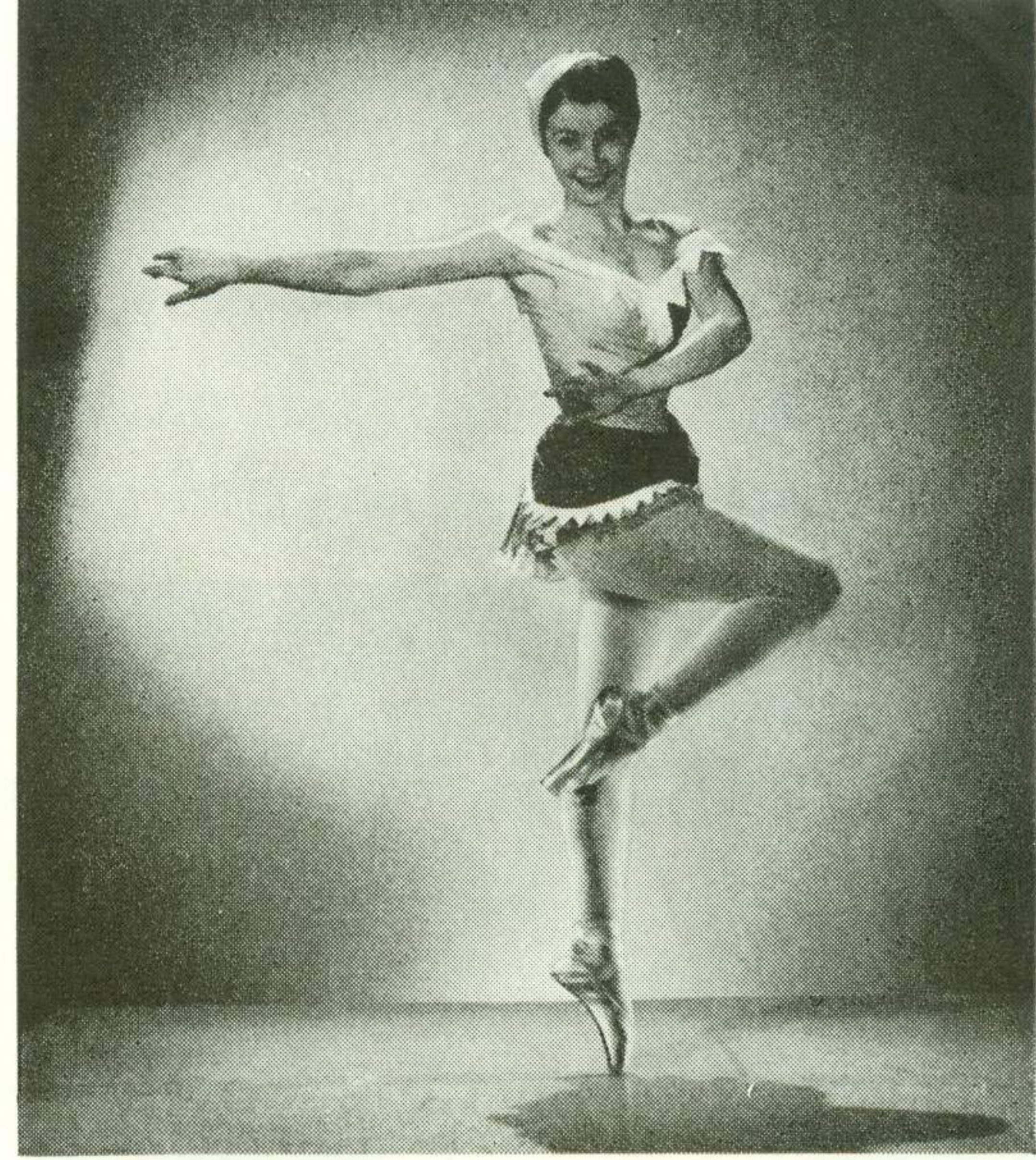




DEIRDRE O'CONAIRE



RONALD EMBLEN



DIANE WESTERMAN



JEAN-PIERRE ALBAN



JENNIFER ALDERTON



JELKO YURESHA



JANET KEDGE



GAYE FULTON



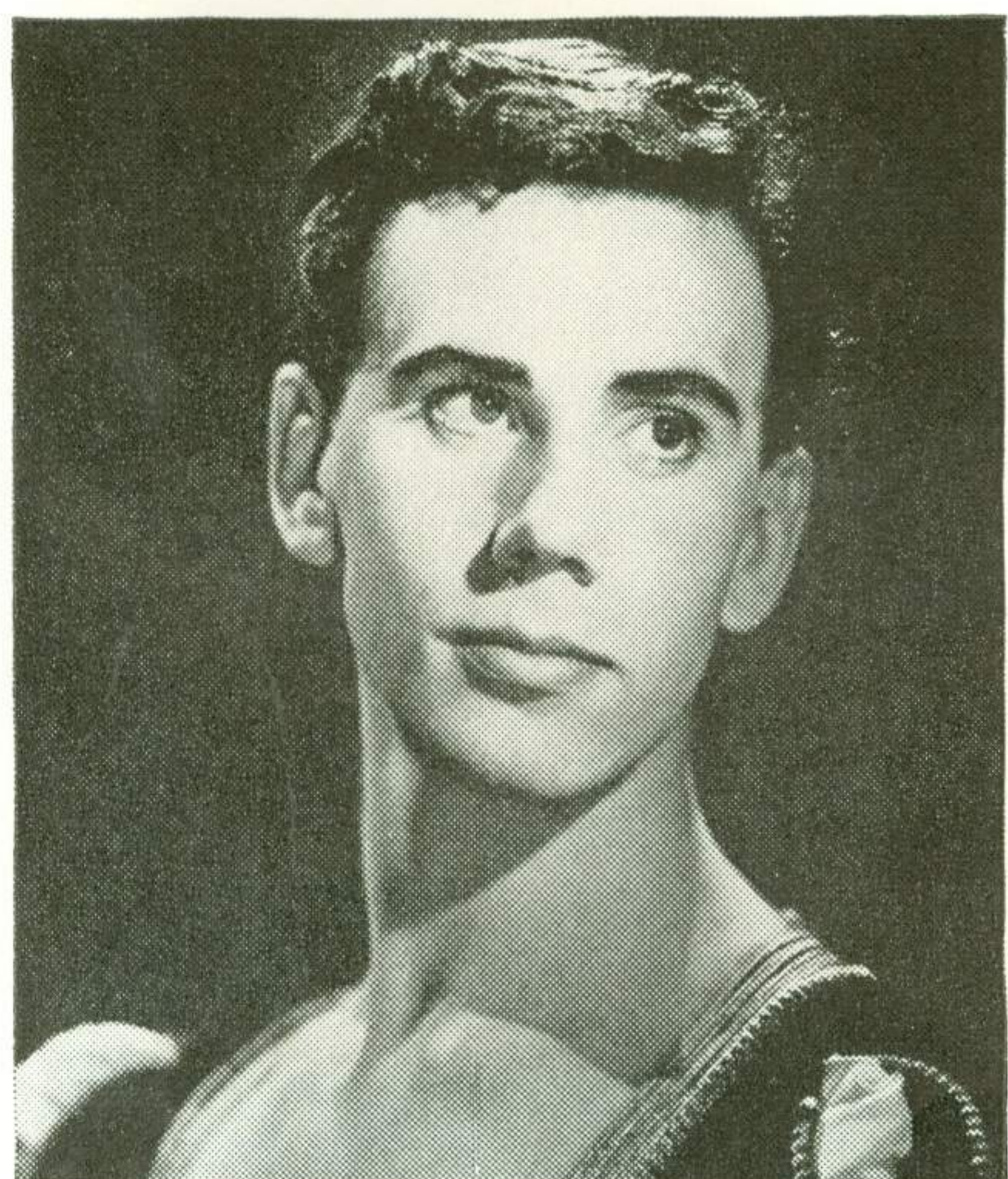
JOAN POTTER



PETER WHITE



IVAN BAPTIE



SIMON MOTTRAM

ROYAL FESTIVAL HALL

(General Manager: T. E. Bean, C.B.E.)

Christmas Season

**LONDON'S
FESTIVAL BALLET**

Director: JULIAN BRAUNSWEG

MONDAY, 26th DECEMBER, 1960

to

SATURDAY, 14th JANUARY, 1961

Daily (Sundays excepted) at 2.30 p.m. and 7.30 p.m.

THE NUTCRACKER

in its entirety

A Ballet in a Prologue and Two Acts (Four Scenes)

Original Production by ALEXANDRE BENOIS

Music by TCHAIKOWSKY

Choreography by DAVID LICHINE

FULL BALLET COMPANY OF ONE HUNDRED

Children's 'Corps-de-Ballet' under the direction of
GRACE CONE

LONDON PHILHARMONIC ORCHESTRA

Tickets: 17/6, 14/-, 10/6, 7/6 from the Box Office, Royal
Festival Hall, London, S.E.1 (Telephone: Waterloo 3191) and
from the usual agents.



SENIOR SERVICE

Satisfy

WELL MADE • WELL PACKED

GLOBE THEATRE

STOCKTON-on-TEES

Manager: G. CHADWICK

Evenings at 7.15 p.m. Matinee: Saturday at 2.30 p.m.

Programme

WEDNESDAY, 30th NOVEMBER (Matinee and Evening) and
THURSDAY, 1st DECEMBER, 1960

LES SYLPHIDES—Romantic Ballet in One Act

Music by Chopin. Choreography by Fokine. Decor by George Kirsta.

Nocturne	Deirdre O'Conaire, Janet Kedge, Gaye Fulton, Ivan Baptie (Wed. mat.) Olga Ferri, Gaye Fulton, Jennifer Alderton, Vladimir Skouratoff (Wed. eve.) Olga Ferri, Jennifer Alderton, Gaye Fulton, Jelko Yuresha (Thurs.) and the ladies of the Corps-de-Ballet
Valse	Gaye Fulton
Mazurka	Janet Kedge (Wed. mat.) Jennifer Alderton (Wed. eve. and Thurs.)
Mazurka	Ivan Baptie (Wed. mat.) Vladimir Skouratoff (Wed. eve.) Jelko Yuresha (Thurs.)
Prelude	Deirdre O'Conaire (Wed. mat.) Olga Ferri (Wed. eve. and Thurs.)
Valse in C Sharp Minor		Deirdre O'Conaire, Ivan Baptie (Wed. mat.) Olga Ferri, Vladimir Skouratoff (Wed. eve.) Olga Ferri, Vladimir Skouratoff (Thurs.)
Valse Brillante	Deirdre O'Conaire, Janet Kedge, Gaye Fulton, Ivan Baptie (Wed. mat.) Olga Ferri, Gaye Fulton, Jennifer Alderton, Vladimir Skouratoff (Wed. eve.) Olga Ferri, Jennifer Alderton, Gaye Fulton, Jelko Yuresha (Thurs.) and the ladies of the Corps-de-Ballet

In a wooded glade under the gentle glow of silvery moonbeams, the dancers, attired as sylphs, dance to the romantic strains of Chopin's music, to the dreamy nocturnes, languorous waltzes and animated mazurkas, transporting their audience to another world.

INTERVAL

COPPELIA

Ballet in Three Acts by Nutter and Saint-Leon, staged by Harald Lander

Music by Leo Delibes

Decor and Costumes by Jean-Denis Maillart

The original choreography freely adapted and arranged by Harald Lander

Act One: A village in Galicia

Swanhilda	Dianne Richards (Wed. mat.) Jeannette Minty (Wed. eve. and Thurs.)
Franz, her fiance	Vladimir Skouratoff (Wed. mat.) Louis Godfrey (Wed. eve. and Thurs.)
Coppelius, a doll-maker	Ronald Emblen
Coppelia, his favourite doll	Christine Hutchinson
Swanhilda's girl-friend	Diane Westerman (Wed. mat. and Thurs.) Joan Potter (Wed. eve.)
Franz's friend	Jelko Yuresha
First Gipsy Girl	Deirdre O'Conaire
Gipsy Girls	Jennifer Alderton, Janet Kedge, Gaye Fulton
The Mayor	Peter White
The Inn-Keeper	Jeremy Sutcliffe

A waitress Stella Orton
 Swanhilda's Girl-friends Susan Winterton, Mary Coulson, Angela Symonds, Gillian Shane, Diane Elesmore, Priscilla Moulds
 Townsfolk Barry McGrath, Hendrik Davel, Gale Law, Ivan Baptie, Alan Woodard, William Perrie, Rodney Macdonald, Alan Jones, Michel Boudet, Peter Brownlee, Simon Mottram

INTERVAL

Act Two: The work-shop of Coppelius

The Dolls	{	Coppelia	Christine Hutchinson
		Pierrot	Jeremy Sutcliffe
		Cupid	Stella Orton
		Spanish Dancer	Carol Yule
		Astronomer	Rodney Macdonald
		Red Indian	Donald Sweet
		Negro	Leo Senn
		Chinaman	Alan Jones
Swanhilda			Dianne Richards (Wed. mat.) Jeannette Minty (Wed. eve. and Thurs.)
Franz			Vladimir Skouratoff (Wed. mat.) Louis Godfrey (Wed. eve. and Thurs.)
Coppelius			Ronald Emblen
Swanhilda's Girl-friends			Susan Winterton, Mary Coulson, Angela Symonds, Gillian Shane, Diane Elesmore, Priscilla Moulds

INTERVAL

Act Three: A village in Galicia

Swanhilda			Dianne Richards (Wed. mat.) Jeannette Minty (Wed. eve. and Thurs.)
Franz			Vladimir Skouratoff (Wed. mat.) Louis Godfrey (Wed. eve. and Thurs.)
Coppelius			Ronald Emblen
The Mayor			Peter White

Friends, Gipsies, Towns-folk, etc.

ACT ONE

In a Galician village where Swanhilda lives opposite her is the house of Coppelius, a mysterious dollmaker who keeps his favourite doll, Coppelia, in the window. Swanhilda suspects her fiance, Franz, of courting Coppelia. The townsfolk gather in front of the inn, where the girls jingle an ear of corn which is to tell them whether they will be married; only true lovers can hear the answer, but as Franz hears nothing, Swanhilda breaks off her engagement and Franz dances with a gypsy girl. Later Coppelius leaves his house and loses his key, which is found by Swanhilda who leads a group of girls into Coppelius's house.

ACT TWO

Inside the house they discover that all the strange figures are merely dolls and Swanhilda is relieved to find that Coppelia is also a doll. They set the dolls in motion and have a great time until they are chased away by Coppelius—all excepting Swanhilda who has hidden behind the curtain. Coppelius catches Franz breaking in and learns of his love for Coppelia. He puts a sleeping draught in Franz's drink conceiving the idea of transferring the spirit of the sleeping Franz into the doll Coppelia. Now follows the great impersonation scene which ends when Coppelius realises he has been deceived.

ACT THREE

The mayor announces the betrothal of Swanhilda and Franz and all join in the celebration, even Coppelius, who is given a bag of gold to compensate him for the damage done in his workshop.

Wigs by Wig Creations, Gustave's and Nathans. Stockings by Kayser Bondor.
 Shoes by A. L. Gamba, Anello & Davide and Frederick Freed Ltd.
 Electrical Equipment by Strand Electrical and Engineering Co.
 Crepe Nylon Tights by Fabiola.
 Make-up by Max Factor.
 All costumes and stage curtains washed and cleaned by products supplied by Messrs. Hoover Ltd., using Daz.
 Nylon Net and Satin made by Heathcoat