

PRINCE LITTLER (By arrangement with WILLIAMSON MUSIC LTD.)

presents

OCT 1956

COLE PORTER'S

# CAN-CAN



**GLOBE  
THEATRE  
STOCKTON  
ON TEES  
AN A.B.C. THEATRE**

PROGRAMME 6d.

Always  
"TOP OF THE BILL"  
**CAMERON'S**  
**STRONGARM**  
**ALE**

OBTAINABLE EVERYWHERE IN THE NORTH-EAST

Commencing Sunday, October 28 — For 7 days

**DIANA DORS**  
YVONNE MITCHELL : MICHAEL CRAIG  
**YIELD TO THE NIGHT**

<sup>(X)</sup>  
No persons under 16 can be admitted to any part of this programme

**FORREST TUCKER : MARGARET WHITING**

**PARIS FOLLIES OF 1956**

In Colour <sup>(U)</sup>

TEL. 68641

TEL. 68641

**H. P. TYLER LTD.**

39 HIGH STREET . STOCKTON-ON-TEES

—:—:—  
Family **FOOTWEAR** Specialists

—:—:—  
EARLY AUTUMN STYLES NOW ON DISPLAY  
See our windows now : Repairs a Speciality

FOR CLOTHES BEARING  
THE STAMP  
OF QUALITY—VISIT . . .

*Ernest. Wippenum*  
LTD.

TEL. 6152

**45 HIGH STREET  
STOCKTON-ON-TEES**

TEL. 6152

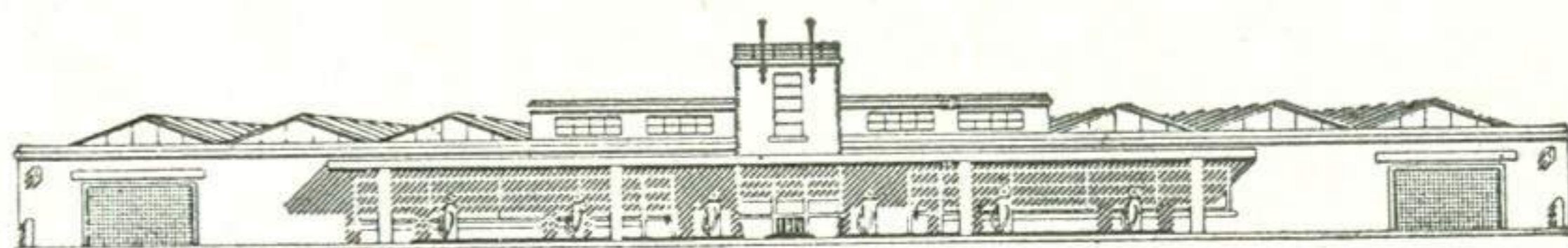
Agents for CHESTER BARRIE, DAKS and SUMRIE CLOTHES ———  
BURBERRY'S RAINCOATS . CHRISTY & WOODROW HATS ———

**GLOBE THEATRE  
STOCKTON-ON-TEES**

Box Office Telephone : 66646

Proprietors ..... ASSOCIATED BRITISH CINEMAS LIMITED  
Managing Director ..... D. J. GOODLATTE  
Director and General Manager ..... W. CARTLIDGE  
Resident Manager ..... G. CHADWICK  
Assistant Manager ..... W. N. LEE

MORRIS M.G. WOLSELEY . MORRIS COMMERCIAL . STANDARD . TRIUMPH



*Wheatleys*

TELEPHONE 65161 (2 lines)

TOWER GARAGE YARM-LANE STOCKTON-ON-TEES



**SALLY ROGERS**  
who plays the role of "Pistache" in Cole Porter's Can-Can

# GLOBE THEATRE

## STOCKTON

One week com. Mon., Oct. 22—Evs. 7.15, Mats. Wed. & Sat. 2.30

### Prince Littler

(By arrangement with WILLIAMSON MUSIC LTD.) presents  
The CY FEUER and ERNEST H. MARTIN Production of

## COLE PORTER'S CAN-CAN

Book and Direction by ABE BURROWS with  
FREDDIE SALES . GEORGE GEE . SALLY ROGERS  
DESMOND AINSWORTH . ALETA MORRISON

Dances and Musical Numbers staged by MICHAEL KIDD  
Reproduced by Harry Haythorne

Settings and Lighting by JO MIELZINER . Costumes by MOTLEY  
Orchestrations by PHILIP J. LANG . Dance Music arranged by GENEVIEVE PITOT  
Production Directed by JEROME WHYTE

*CAST in order of their appearance—*

Bailiff .....	WILLIAM MATTHEWS
Registrar .....	W. EVERSLEIGH
Policemen .....	NORMAN FINCH, BILL FUTTER, HARRY TASKER
Judge Paul Barriere .....	EDWARD PALMER
Court President Henri Marceau .....	DOUGLAS ORR
Judge Aristide Forestier .....	DESMOND AINSWORTH
Claudine .....	ALETA MORRISON
Gabriel .....	IONA MACRAE
Marie .....	MUSETTE HOLLAND
Celestine .....	FRIEDA KNORR
Hilaire Jussac .....	GEORGE GEE
Boris Adzinidzinadze .....	FREDDIE SALES
Hercule .....	JOHN SINCLAIR
Theophile .....	DENNIS BURROWS
Etienne .....	GEORGE BALLANTINE
Waiter .....	FRANK CRANE
La Mome Pistache .....	SALLY ROGERS
Henri, Tobac Waiter .....	NORMAN FINCH
Cafe Waiter .....	HARRY TASKER
Cafe Customer .....	DOUGLAS ORR
Model .....	JOY ADAMS
Mimi .....	JUDY LAMBERT
Customers ...	ISOBEL HURLL, DOUGLAS ORR, BILL FUTTER
Nun .....	ISOBEL HURLL
Doctor .....	DOUGLAS ORR
Second .....	NORMAN FINCH
Prosecutor .....	DOUGLAS ORR

*Dancers* :—Joy Adams, Lesley Allen, Jacqueline Howe, Maureen Corp, Carolyn Dee, Denyse Dunbar, Ann Gates, Isobel Hurl, Judy Lambert, Frances Leak, Joy Macpherson (Ballet Mistress), Gerald Atkins, Roy Desmond, Keith Galloway, David Gilbert, Desmond Graham, William Martin, Karl Morley Bill Owen, Peter Reynolds, Colin Russell, Reginald Templar.

## COLE PORTER'S CAN-CAN

### SYNOPSIS OF SCENES

The entire action takes place in Paris, 1893

#### Act One

- Scene 1. Correctional Court
- Scene 2. A Street in Montmartre
- Scene 3. Bal Du Paradis
- Scene 4. Pistache's Offices
- Scene 5. Bal Du Paradis
- Scene 6. Sidewalk Cafe
- Scene 7. Jail
- Scene 8. The Atelier
- Scene 9. The Street
- Scene 10. Quatz' Arts Ball

— I N T E R V A L —

#### Act Two

- Scene 1. The Atelier
- Scene 2. The Cafe
- Scene 3. "La Blanchisserie"
- Scene 4. The Street
- Scene 5. Roof of "La Blanchisserie"
- Scene 6. Prison
- Scene 7. Court of Assizes

### MUSICAL NUMBERS

#### Act One

*Maidens Typical of France* ..... The Laundresses  
*Never Give Anything Away* ..... Pistache  
*C'est Magnifique* ..... Pistache, Aristide  
*Quadrille* ..... Claudine, Laundresses and Friends with David Gilbert  
*Come Along with Me* ..... Jussac and Boris  
*I am in Love* ..... Aristide  
*If You Love Me Truly* ..... Boris, Claudine, Theophile, Hercule, Etienne,  
 Gabriel, Celestine and Marie  
*Montmart'* ..... Singing Ensemble  
*The Garden of Eden*  
*Eve* ..... Claudine  
*Inchworms* ..... Carolyn Dee, Bill Owen  
*Flamingos* ..... Joy Adams, David Gilbert  
*Kangaroos* ..... Lesley Allen, William Martin  
*Penguins* ..... Denyse Dunbar, Colin Russell  
*Sea Horses* ..... Isobel Hurl, Reginald Templar  
*Frogs* ..... Maureen Corp, Desmond Graham  
*Leopards* ..... Judy Lambert, Karl Morley  
*Snake* ..... Keith Galloway  
*Allez-Vous-En* ..... Pistache

#### Act Two

*Never, Never be an Artiste* ..... Boris, Theophile, Etienne, Hercule and Model  
*It's All Right with Me* ..... Aristide  
*Every Man is a Stupid Man* ..... Pistache  
*The Apaches* ..... Claudine and Dancers with David Gilbert  
*I Love Paris* ..... Pistache  
*Reprise: C'est Magnifique* ..... Aristide and Pistache  
*Can-Can* ..... Pistache, Claudine and Laundresses  
*Finale* ..... Entire Company

Orchestra under the direction of K. Behrens.

Scenery painted by Alick Johnstone; built by Bert Reynolds and Lou Walton. Properties constructed by E. Boxall. Dancing and Singing Ladies' costumes by St. John Roper. Quatz' Arts Ball costumes by St. John Roper. Principal and dance Gentlemen's costumes by Angels of Warwick Street. Uniforms and Singing Gentlemen's costumes by Morris Angel. Shoes by Gamba. Hats by Messrs. A. & L. Corne. Hosiery by George Copper. Woollen goods by Finch and Smith, Hendon. Court Room Robes by Ede and Ravenscroft. Miss Sally Rogers' and Miss Aleta Morrison's costumes by B. J. Simmons and Co. Wigs and Hairdressing by Wig Creations Ltd. Draperies by J. Holliday and Sons Ltd. Virginia Cigaretts by Abdulla.

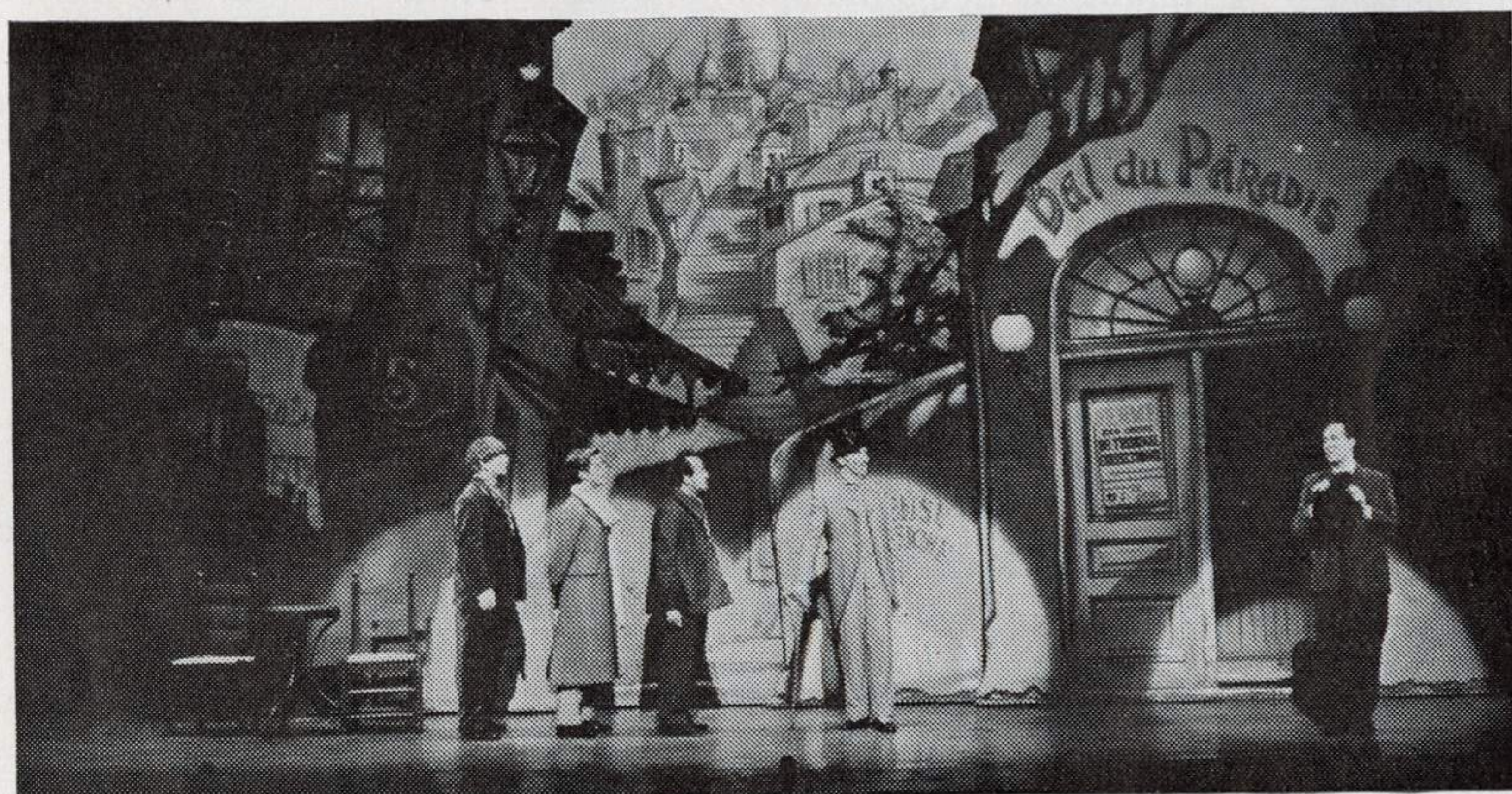
For CAN-CAN COMPANY:

GENERAL MANAGER ..... CHARLES HARRINGTON  
 Stage Manager ..... Douglas Cameron  
 Assistant Stage Manager ..... John Cleaver  
 Wardrobe Supervisor ..... Mae Rogers

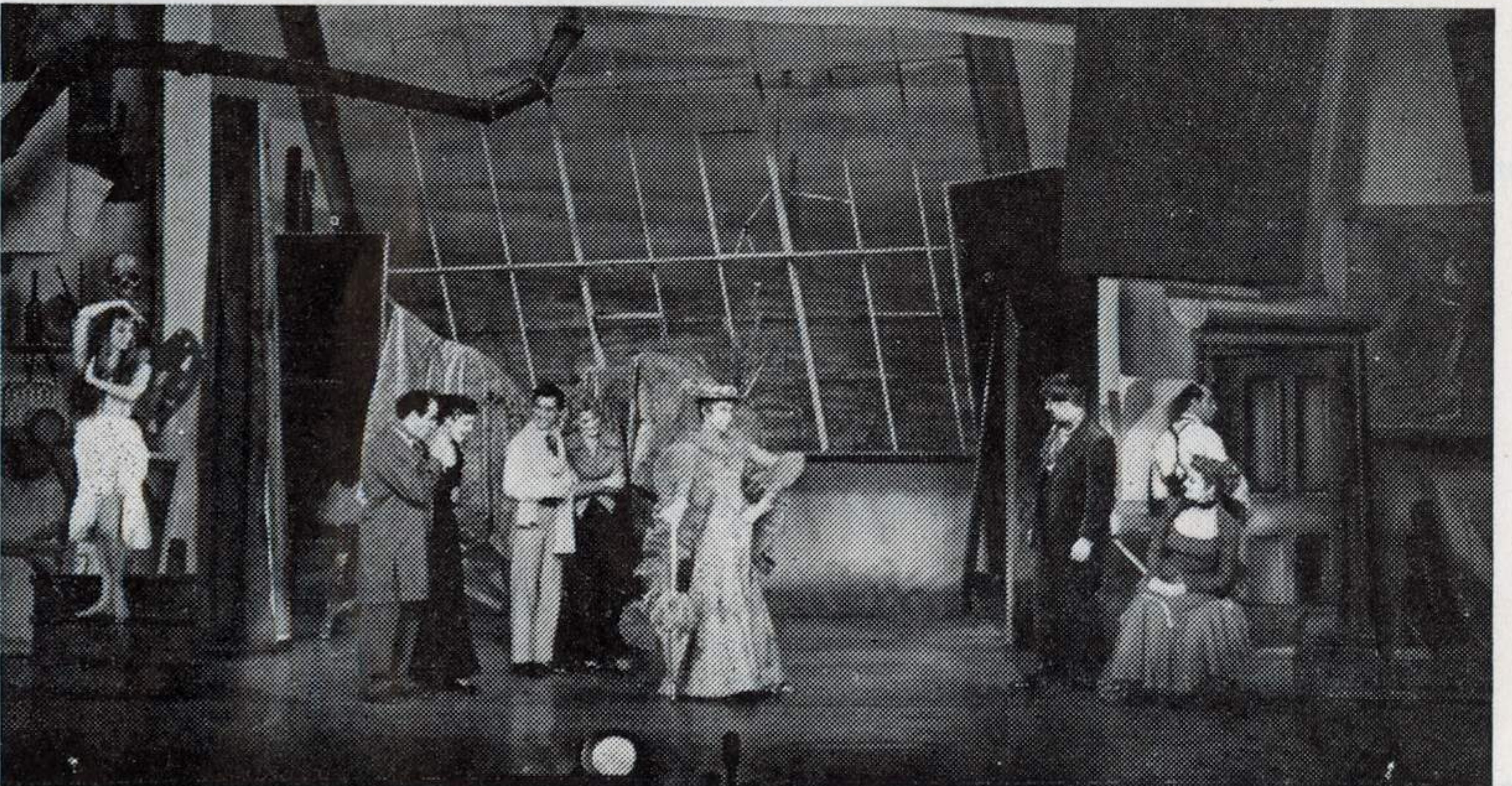
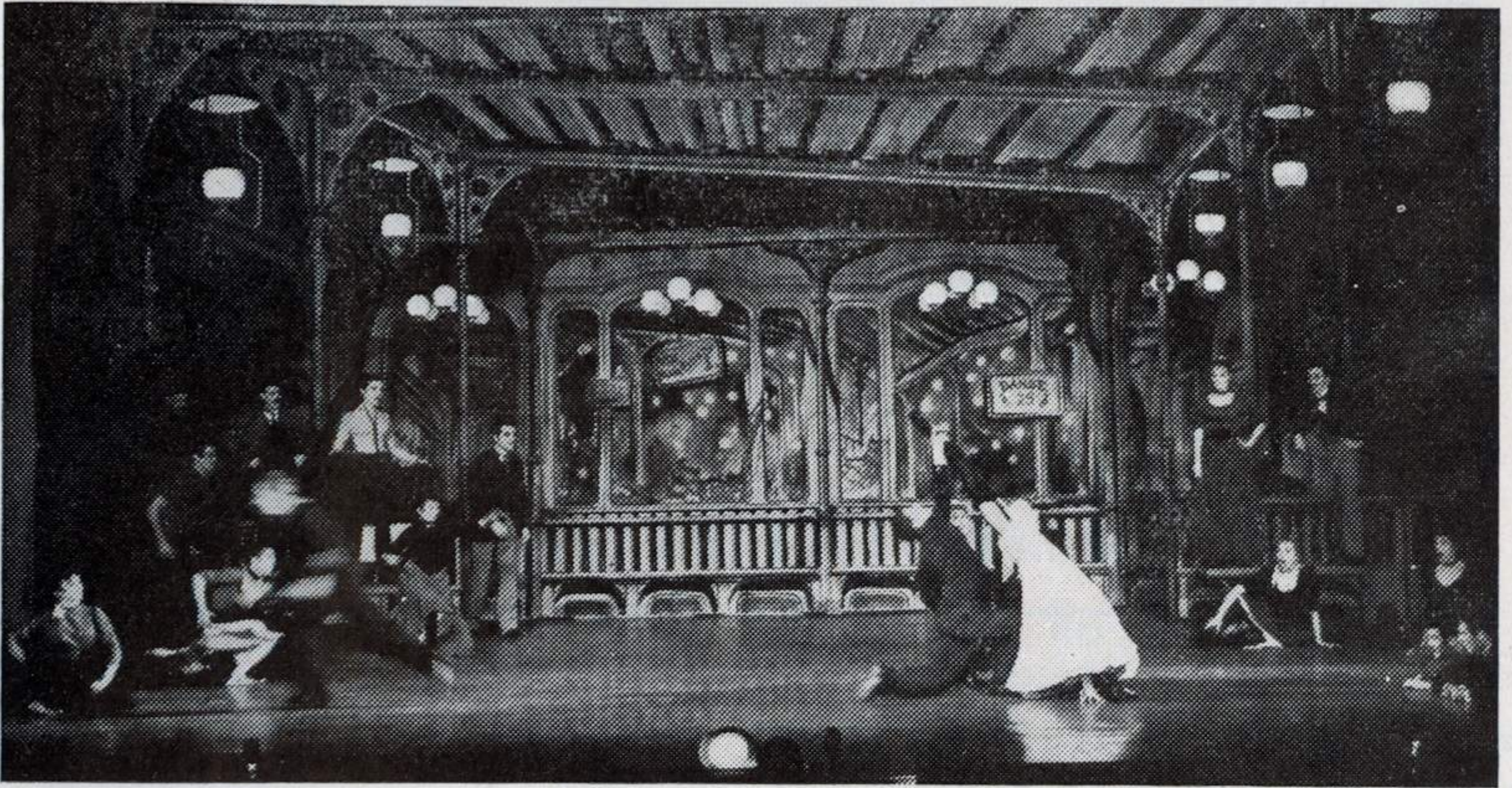
General Manager (for Prince Littler Productions Ltd.) ..... FRANK C. MARSHALL

The Regulations of the Watch Committee provide that : (a) The public may leave at the end of the performance by all exits, and all exit doors must at that time be open. Note—The Theatre can be emptied very quickly if the audience leave in an orderly manner. (b) All gangways, passages, staircases and exits must be kept entirely free from any obstructions. (c) Persons shall not be permitted to stand or sit in any of the intersecting gangways, or stand in any unseated place in the auditorium unless standing in such place has been specially allowed by the Watch Committee. (d) The safety curtain must be lowered at an early period during each performance so as to ensure its being in proper working order.

SIX SCENES FROM COLE PORTER'S CAN-CAN



394 PERFORMANCES AT THE LONDON COLISEUM





TELEPHONE 67616

# LESLIE BROWN

The Record Shop and Recording Studio  
95 HIGH STREET, STOCKTON-ON-TEES



*The Hallmark of Quality*  
**ACCREDITED DEALER**

—○—  
— ALWAYS IN STOCK —

Records from all the "Globe" stage and film presentations

Ample car parking facilities available:—Church Road Car Park (50 yards from Theatre); High Street and adjacent streets.

All bus stops are within easy reach of the Theatre.

"On Call" service for Doctors, Nurses, etc. Please leave your name and seat number at Box Office.

The Sales Kiosk in the main entrance is open during the intervals for the sale of cigarettes and confectionery.

Photographing in the Theatre is forbidden. All Productions are copyright and the unauthorised photographing of scenes, incidents and acts is illegal.

The Management reserves the right to refuse admission to the Theatre and to change, vary or omit, without previous notice, any item of the Programme.

**CARPETS . RUGS . RUNNERS . STAIR CARPETS, Etc.**

● **DIRECT TO THE PUBLIC** ●

Crass & Terry Ltd.

# CARPET WAREHOUSE

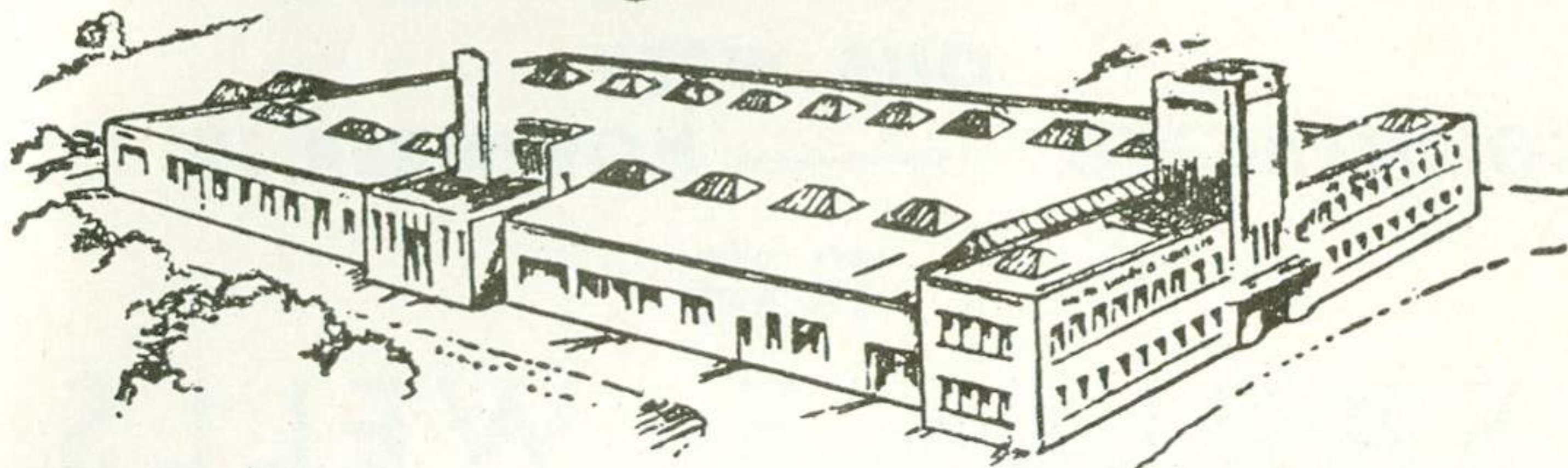
Telephones : 66826 & 67618

Branches at **SUNDERLAND & MIDDLESBROUGH**

**15/17 YARM LANE . STOCKTON-ON-TEES**

**SPRING INTERIORS & BEDDING . COMPLETE RANGE IN STOCK**

# SPARK'S QUALITY CAKES



From Our Retail Branches and Good Grocers Throughout  
Co. Durham and North Yorkshire

Head Office : Daylight Bakery, Stockton-on-Tees — Telephone : 67304

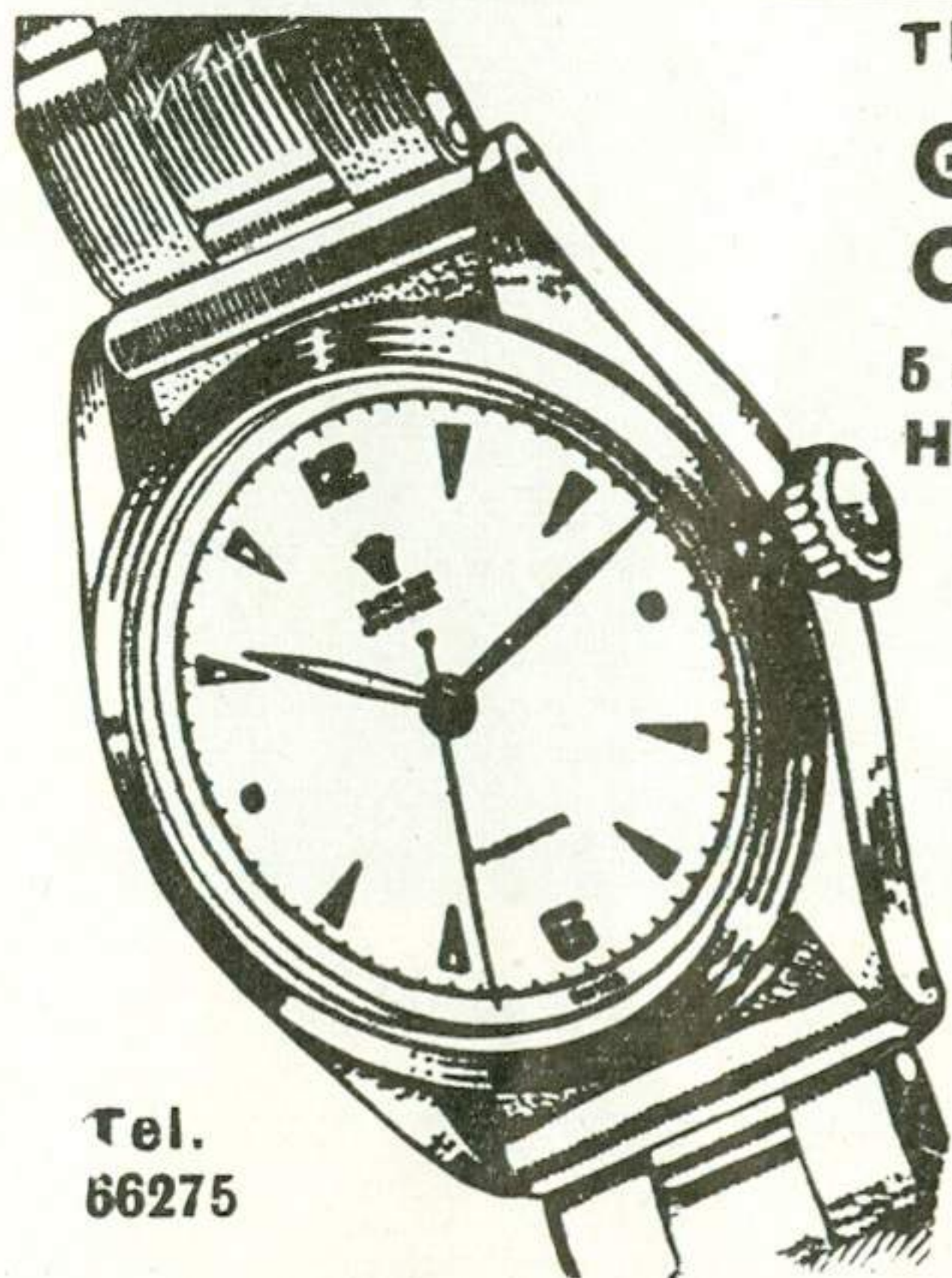
Coming to the GLOBE, Sunday, November 4, 1956

JOHN MILLS  
RICHARD ATTENBOROUGH

## THE BABY AND THE BATTLESHIP

Eastman Colour ©

JOHN JUSTIN : EVA DAHLBECK  
THE VILLAGE ©



Tel.  
66275

THE NORTHERN  
GOLDSMITHS  
COMPANY

5-7 Victoria Buildings  
High St., Stockton-on-Tees

for

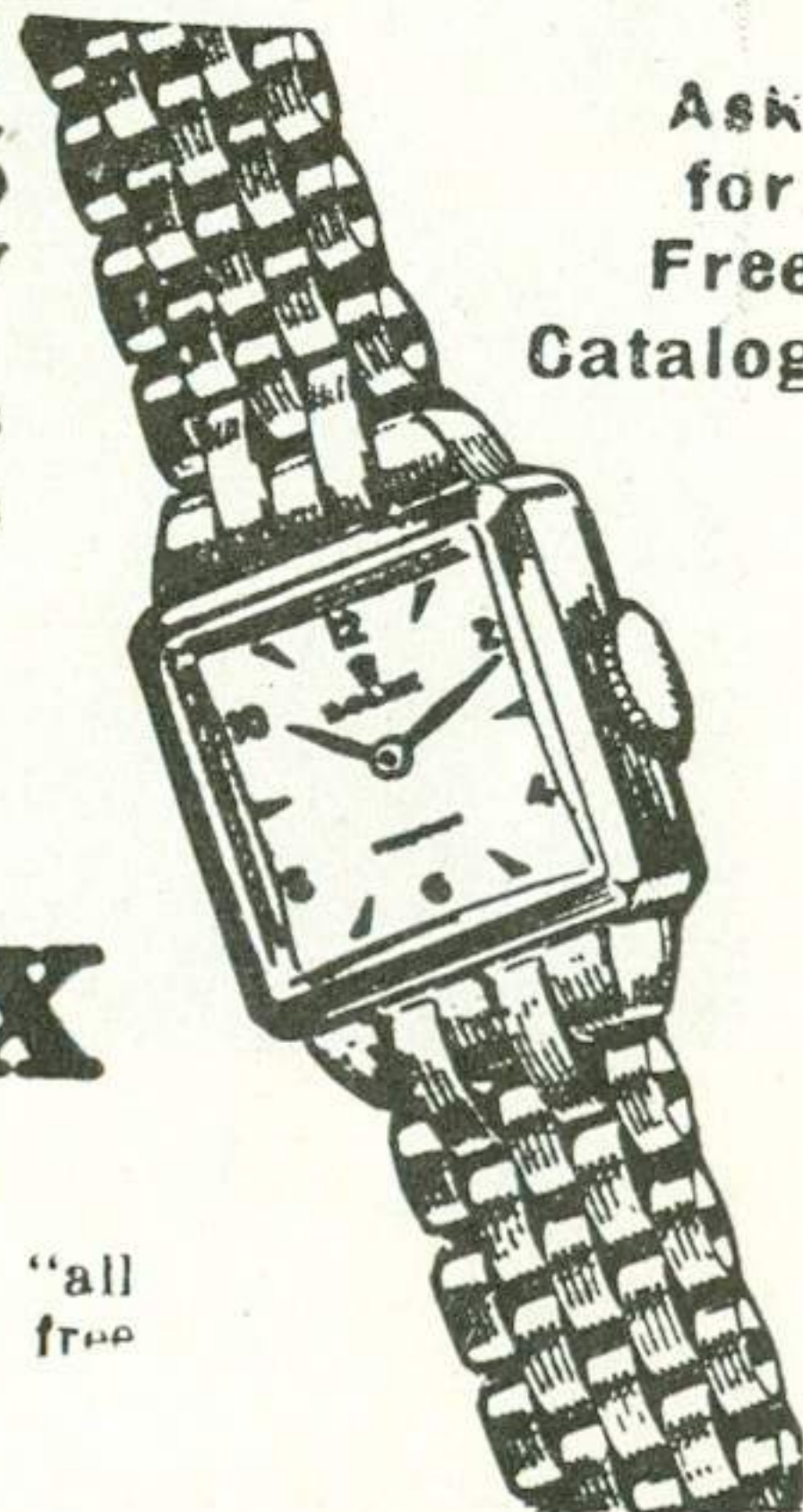


# ROLEX

WATCHES

Every watch covered by our "all  
in" two-year guarantee and free  
insurance against loss.

Ask  
for  
Free  
Catalogue



★ **OUR NEXT BIG STAGE SHOW** ★

---

**ONE WEEK**  
**COMMENCING ——— NOVEMBER 19, 1956**

**THE**  
**SADLER'S WELLS**  
**THEATRE BALLET**



**ALL SEATS MAY BE BOOKED IN ADVANCE**  
**————— Box Office Open Daily —————**